

## Product datasheet for TP304576

### Vinculin (VCL) (NM\_003373) Human Recombinant Protein

#### Product data:

Product Type:	Recombinant Proteins
Description:	Recombinant protein of human vinculin (VCL), transcript variant 2, 20 µg
Species:	Human
Expression Host:	HEK293T
Expression cDNA Clone or AA Sequence:	>RC204576 protein sequence Red=Cloning site Green=Tags(s)

MPVFHTRTIESILEPVAQQISHLVIMHEEGEVDGKAIPDLTAPVAAVQAAVSNLVRVGKETVQTTEDQIL  
KRDMPPAFIKVENACTKLVQAAQMLQSDPYSVPARDYLIDGSRGILSGTSDLLLTDFDEAEVRKIIRVCKG  
ILEYLTVAEVVETMEDLVITYTKNLGPGMTKMAKMIDERQQELTHQEHRVMLVNSMNTVKELLPVLISAMK  
IFVTTKNSKNQGIEEALKNRNFTLEKMSAEINEIIRVLQLTSWDEDAWASKDTEAMKRALASIDSKLNQA  
KGWLRDPSASPGDAGEQAIRQILDEAGKVGELCAGKERREILGTCKMLGQMTDQVADLRARGQGSSPVA  
M  
QKAQQVSQGLDVLTAKVENAARKLEAMTNSKQSIAKKIDAAQNLADPNNGGPEGEEQIRGALAEARKIAE  
LCDDPKERDDILRSLGEISALTSKLADLRRQGKGDSPEARALAKQVATALQNLQTKTNRAVANSRPAKAA  
VHLEGKIEQAQRWIDNPTVDDRGGVQAAIRGLVAEGHRLANVMMGPYRQDLLAKCDRVDQLTAQLADL  
AA  
RGEESPQARALASQLQDSLKDLKARMQEAMTQEVSDFSDTTTPIKLLAVAATAPPDAPNREEVFDERA  
ANFENHSGKLGATAEKAAAVGTANKSTVEGIQASVKTARELTPQVSAARILLRNPNGNQAAYEHFETMKN  
QWIDNVEKMTGLVDEAIDTKSLLDASEEAIKKDLCKVAMANIQPQMLVAGATSIARRANRILLVAKRE  
VENSEDPKFREAVKAASDELSTISPMVMDAKAVAGNISDPGLQKSFLDSGYRILGAVAKVREAFQPQEP  
DFPPPPPDLEQLRLTDELAPPKPLPEGEVPPPPPPPEEKDEEFPEQKAGEVINQPMMAARQLHDEAR  
KWSSKGNIIAAKRMALLMAEMSRLVRGGSGTKRALIQCAKDIKASDEVTRLAKEVAKQCTDKRIRTN  
LLQVCERIPSTIQLKILSTVKATMLGRNINISDEESEQATEMLVHNAQNLMQSVKETVREAEASIKIRT  
DAGFTLRWVRKTPWYQ

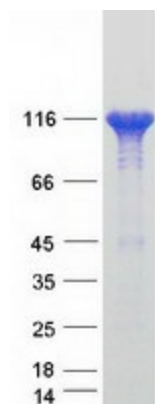
TRTRPLEQKLISEEDLAANDILDYKDDDDKV

Tag:	C-Myc/DDK
Predicted MW:	116.5 kDa
Concentration:	>0.05 µg/µL as determined by microplate BCA method
Purity:	> 80% as determined by SDS-PAGE and Coomassie blue staining



[View online »](#)

<b>Buffer:</b>	25 mM Tris-HCl, 100 mM glycine, pH 7.3, 10% glycerol
<b>Bioactivity:</b>	WB positive control (PMID: <a href="#">26439954</a> )
<b>Preparation:</b>	Recombinant protein was captured through anti-DDK affinity column followed by conventional chromatography steps.
<b>Note:</b>	For testing in cell culture applications, please filter before use. Note that you may experience some loss of protein during the filtration process.
<b>Storage:</b>	Store at -80°C.
<b>Stability:</b>	Stable for 12 months from the date of receipt of the product under proper storage and handling conditions. Avoid repeated freeze-thaw cycles.
<b>RefSeq:</b>	<a href="#">NP_003364</a>
<b>Locus ID:</b>	7414
<b>UniProt ID:</b>	<a href="#">P18206</a>
<b>RefSeq Size:</b>	5443
<b>Cytogenetics:</b>	10q22.2
<b>RefSeq ORF:</b>	3198
<b>Synonyms:</b>	CMD1W; CMH15; HEL114; MV; MVCL
<b>Summary:</b>	Vinculin is a cytoskeletal protein associated with cell-cell and cell-matrix junctions, where it is thought to function as one of several interacting proteins involved in anchoring F-actin to the membrane. Defects in VCL are the cause of cardiomyopathy dilated type 1W. Dilated cardiomyopathy is a disorder characterized by ventricular dilation and impaired systolic function, resulting in congestive heart failure and arrhythmia. Multiple alternatively spliced transcript variants have been found for this gene, but the biological validity of some variants has not been determined. [provided by RefSeq, Jul 2008]
<b>Protein Families:</b>	Druggable Genome
<b>Protein Pathways:</b>	Adherens junction, Focal adhesion, Leukocyte transendothelial migration, Regulation of actin cytoskeleton

**Product images:**

Coomassie blue staining of purified VCL protein (Cat# TP304576). The protein was produced from HEK293T cells transfected with VCL cDNA clone (Cat# [RC204576]) using MegaTran 2.0 (Cat# [TT210002]).