

## Product datasheet for **TP304573SE**

### GCP2 (CXCL6) (NM\_002993) Human Recombinant Protein

#### Product data:

Product Type:	Recombinant Proteins
Description:	Purified recombinant protein of Human chemokine (C-X-C motif) ligand 6 (granulocyte chemotactic protein 2) (CXCL6), secretory expressed in HEK293T cells, 20ug
Species:	Human
Expression Host:	HEK293T
Expression cDNA Clone or AA Sequence:	>RC204573 protein sequence <b>Red</b> =Cloning site <b>Green</b> =Tags(s)  MSLPSSRAARVPGPSGSLCALLALLLLTPPGPLASAGPVSAVLTELRCTCLRVTLRVNPKTIGKLVFP AGPQCSKVVEVASLKNKGQVCLDPEAPFLKKVIQKILDSGNKKN  <b>SGPTRTRPLEQKLISEEDLAANDILDYKDDDDKV</b>
Tag:	C-Myc/DDK
Predicted MW:	12.2 kDa
Concentration:	>50 ug/mL as determined by microplate Bradford method
Purity:	> 80% as determined by SDS-PAGE and Coomassie blue staining
Buffer:	25mM Tris-HCl, pH7.3, 100mM glycine, 10% glycerol
Note:	For culture applications, please filter before use. Note that you may experience some loss of protein during the filtration process.
Storage:	Store at -80°C after receiving vials.
Stability:	Stable for at least 1 year from receipt of products under proper storage and handling conditions. Avoid repeated freeze-thaw cycles.
RefSeq:	<a href="#">NP_002984</a>
Locus ID:	6372
UniProt ID:	<a href="#">P80162</a>
RefSeq Size:	1677
Cytogenetics:	4q13.3
RefSeq ORF:	342



[View online »](#)

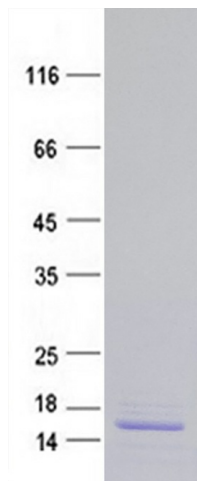
**Synonyms:** CKA-3; GCP-2; GCP2; SCYB6

**Summary:** The protein encoded by this gene is a member CXC chemokine family. The encoded protein is a chemotactic for neutrophil granulocytes and has antibacterial action against gram-negative and gram-positive bacteria. This gene and other members of the CXC chemokine gene family form a gene cluster in a region of chromosome 4q. [provided by RefSeq, Jun 2020]

**Protein Families:** Druggable Genome, Secreted Protein

**Protein Pathways:** Chemokine signaling pathway, Cytokine-cytokine receptor interaction

### Product images:



Coomassie blue staining of purified CXCL6 protein (Cat #TP304573SE). The protein was produced from mammalian cells transfected with CXCL6 cDNA clone (Cat #[RC204573]).