

## Product datasheet for **TP304556L**

### MRGPRF (NM\_145015) Human Recombinant Protein

#### Product data:

Product Type:	Recombinant Proteins
Description:	Recombinant protein of human MAS-related GPR, member F (MRGPRF), transcript variant 2, 1 mg
Species:	Human
Expression Host:	HEK293T
Expression cDNA Clone or AA Sequence:	>RC204556 protein sequence <b>Red</b> =Cloning site <b>Green</b> =Tags(s)

MAGNCSWEAHPGNRNKMCPGLSEAPELYSRGFLTIEQIAMLPPPAVMNYIFLLLCLCGLVGNGLVLWFFG  
FSIKRNPFSIYFLHLASADVGYLFSKAVFSILNTGGFLGTFADYIRSVCRVLGLCMFLTGVSLPVAVSAE  
RCASVIFPAWYWRRRPKRLSAVVCALLWVLSLLVTCLHNYFCVFLGRGAPGAACRHMDFLGLLFLCC  
PLMVLPLCALILHVECRARRRQRS AKLNHVILAMVSVFLVSSIYLGIDWFLFWVFQIPAPFPEYVTDLCI  
CINSSAKPIVYFLAGRDKSQRLWEPLRVWFQRALRDGAELGEAGGSTPNTVTMEMQCPPGNAS

**TR**TRPLEQKLISEEDLAANDILDYKDDDDKV

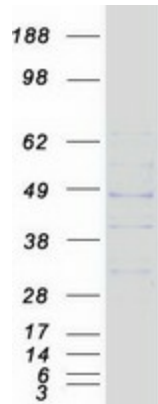
Tag:	C-Myc/DDK
Predicted MW:	38 kDa
Concentration:	>0.05 µg/µL as determined by microplate BCA method
Purity:	> 80% as determined by SDS-PAGE and Coomassie blue staining
Buffer:	25 mM Tris-HCl, 100 mM glycine, pH 7.3, 10% glycerol
Preparation:	Recombinant protein was captured through anti-DDK affinity column followed by conventional chromatography steps.
Note:	For testing in cell culture applications, please filter before use. Note that you may experience some loss of protein during the filtration process.
Storage:	Store at -80°C.
Stability:	Stable for 12 months from the date of receipt of the product under proper storage and handling conditions. Avoid repeated freeze-thaw cycles.
RefSeq:	<a href="#">NP_659452</a>
Locus ID:	116535



[View online »](#)

UniProt ID:	<u>Q96AM1, A0A024R5F0</u>
RefSeq Size:	2308
Cytogenetics:	11q13.3
RefSeq ORF:	1029
Synonyms:	GPR140; GPR168; MRGF; RTA
Summary:	Orphan receptor. May bind to a neuropeptide and may regulate nociceptor function and/or development, including the sensation or modulation of pain (By similarity).[UniProtKB/Swiss-Prot Function]

### Product images:



Coomassie blue staining of purified MRGPRF protein (Cat# [TP304556]). The protein was produced from HEK293T cells transfected with MRGPRF cDNA clone (Cat# [RC204556]) using MegaTran 2.0 (Cat# [TT210002]).