

Product datasheet for **TP304551M**

SAAL1 (NM_138421) Human Recombinant Protein

Product data:

Product Type: Recombinant Proteins

Description: Recombinant protein of human serum amyloid A-like 1 (SAAL1), 100 µg

Species: Human

Expression Host: HEK293T

**Expression cDNA Clone
or AA Sequence:** >RC204551 protein sequence
Red=Cloning site **Green**=Tags(s)

MDRNPSPPPPGRDKEEEEEVAGGDCIGSTVYSKHWLFGVLSGLIQIVSPENTKSSSDDEEQLTELDEEM
ENEICRVWDMMSMEDVALFLQEFNAPDIFMGVLAKSKCPRLREICVGILGNMACFQEICVSISSDKNLGQ
VLLHCLYSDPPTLLETSLRLTLCLSQAEEVASVWVERIQEHPAIYDSICFIMSSSTNVDLLVKVGEVVDK
LFDLDEKLMLEWVRNGAAQPLDQPQEESEEQPVFRLVPCILEAAKQVRSENPEWLDVYMHILQLLTTVDD
GIQAIHCPDTGKDIWNLLFDLVCHEFCQSDDPPIILQEQTVLASVFSVLSAIYASQTEQEYLKIEKVD
LPLIDSLIRVLQNMEQCQKKPENSAESNTEETKRTDLTQDDFHLKILKDILCEFLSNIFQALTKETVAQG
VKEGQLSKQKCSSAFQNLPPFYSPVVEDFIKILREVDKALADDLEKNFPSLKVQT

TRTRPLEQKLISEEDLAANDILDYKDDDDKV

Tag: C-Myc/DDK

Predicted MW: 53.4 kDa

Concentration: >0.05 µg/µL as determined by microplate BCA method

Purity: > 80% as determined by SDS-PAGE and Coomassie blue staining

Buffer: 25 mM Tris-HCl, 100 mM glycine, pH 7.3, 10% glycerol

Preparation: Recombinant protein was captured through anti-DDK affinity column followed by conventional chromatography steps.

Note: For testing in cell culture applications, please filter before use. Note that you may experience some loss of protein during the filtration process.

Storage: Store at -80°C.

Stability: Stable for 12 months from the date of receipt of the product under proper storage and handling conditions. Avoid repeated freeze-thaw cycles.

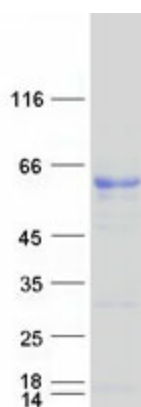
RefSeq: [NP_612430](#)



[View online »](#)

Locus ID:	113174
UniProt ID:	Q96ER3
RefSeq Size:	1545
Cytogenetics:	11p15.1
RefSeq ORF:	1425
Synonyms:	SPACIA1
Summary:	Plays a role in promoting the proliferation of synovial fibroblasts in response to proinflammatory stimuli.[UniProtKB/Swiss-Prot Function]

Product images:



Coomassie blue staining of purified SAAL1 protein (Cat# [TP304551]). The protein was produced from HEK293T cells transfected with SAAL1 cDNA clone (Cat# [RC204551]) using MegaTran 2.0 (Cat# [TT210002]).