

Product datasheet for **TP304546M**

GEF H1 (ARHGEF2) (NM_004723) Human Recombinant Protein

Product data:

Product Type:	Recombinant Proteins
Description:	Recombinant protein of human rho/rac guanine nucleotide exchange factor (GEF) 2 (ARHGEF2), 100 µg
Species:	Human
Expression Host:	HEK293T
Expression cDNA Clone or AA Sequence:	>RC204546 protein sequence Red=Cloning site Green=Tags(s)

MKEAKDARYTNGHLFTTISVSGMTMCYACNKSITAKEALICPTCNVTIHNRCKDTLANCTKVKQKQKAA
LLKNNTALQSVSLRSKTTIRERPSSAIYPSDSFRQSLGSRGRSSLSLAKSVSTTNIAGHFNDESPLGL
RRILSQSTDSLNRNRTLSVESLIDEAEVIYSELMSDFEMDEKDFAAADSWSLAVDSSFLQQHKKEVMKQQ
DVIYELIQTELHHVRTLKIMTRLFRTGMLLEELHLEPGVVQGLFPCVDELSDIHRFLSLLERRRQALCP
GSTRNFVIHRLGDLLISQFSGPSAEQMCKTYSEFCSRHSKALKLYKELYARDKRFQQFIRKVRPAVLKR
HGVQECILLVTQRITKYPLISRILQHSHGIEEERQDLTTALGLVKELLSNVDEGIYQLEKGARLQEIYN
RMDPRAQTPVPGKPGFGREELLRRKLIHDGCLLWKTATGRFKDVLVLLMTDVLVFLQEKDQKYIFPTLDK
PSVSLQNLIVRDIANQEKGMFLISAAPPEMYEVHTASRDDRSTWIRVIQQSVRTCPSREDFLIETEDE
AYLRRIKMELQQKDRALVELLREKVGLFAEMTHFQAEEDGGSGMALPTLPRGLFRSELESPPRGERLLQD
AIREVEGLKDLLVGPVVELLLTPREPALPLEPDSGGNTSPGVTANGEARTFNCSIELCRADSDSSQRDRN
GNQLRSPQEEALQRLVNLYGLLHGLQAAVAQQDTLMEARFPEGPERREKLCRANSRDGEAGRAGAAPVAP
EKQATELALLQRQHALLQEELRRCRRLGEERATEAGSLEARLRESEARALLEREAEAEARRQLAALGQTE
PLPAEAPWARRPVDPRRRSLPAGDALYLSFNPPQPSRGTDRLDLPVTTRSVMHRNFEDRERQELGSPEERL
QDSSDPDTGSEEEGSSRLSPPHSPRDFTRMQDIPEETESRDGEAVASES

TRTRPLEQKLISEEDLAANDILDYKDDDDKV

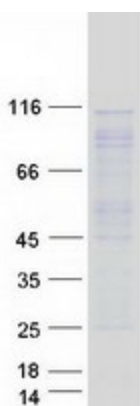
Tag:	C-Myc/DDK
Predicted MW:	108.1 kDa
Concentration:	>0.05 µg/µL as determined by microplate BCA method
Purity:	> 80% as determined by SDS-PAGE and Coomassie blue staining
Buffer:	25 mM Tris-HCl, 100 mM glycine, pH 7.3, 10% glycerol



[View online »](#)

Preparation:	Recombinant protein was captured through anti-DDK affinity column followed by conventional chromatography steps.
Note:	For testing in cell culture applications, please filter before use. Note that you may experience some loss of protein during the filtration process.
Storage:	Store at -80°C.
Stability:	Stable for 12 months from the date of receipt of the product under proper storage and handling conditions. Avoid repeated freeze-thaw cycles.
RefSeq:	NP_004714
Locus ID:	9181
UniProt ID:	Q92974
RefSeq Size:	4119
Cytogenetics:	1q22
RefSeq ORF:	2877
Synonyms:	GEF; GEF-H1; GEFH1; Lfc; LFP40; NEDMHM; P40
Summary:	Rho GTPases play a fundamental role in numerous cellular processes that are initiated by extracellular stimuli that work through G protein coupled receptors. The encoded protein may form complex with G proteins and stimulate rho-dependent signals. Alternatively spliced transcript variants encoding different isoforms have been identified.[provided by RefSeq, Jun 2009]
Protein Families:	Druggable Genome
Protein Pathways:	Pathogenic Escherichia coli infection

Product images:



Coomassie blue staining of purified ARHGEF2 protein (Cat# [TP304546]). The protein was produced from HEK293T cells transfected with ARHGEF2 cDNA clone (Cat# [RC204546]) using MegaTran 2.0 (Cat# [TT210002]).