

Product datasheet for TP304536L

SEH1L (NM_031216) Human Recombinant Protein

Product data:

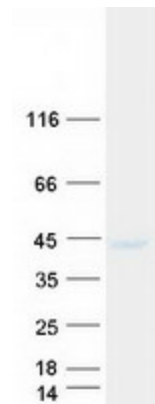
Product Type:	Recombinant Proteins
Description:	Recombinant protein of human SEH1-like (<i>S. cerevisiae</i>) (SEH1L), transcript variant 2, 1 mg
Species:	Human
Expression Host:	HEK293T
Expression cDNA Clone or AA Sequence:	>RC204536 protein sequence Red =Cloning site Green =Tags(s) MFVARSAADHKDLIHDSVDFHGRMATCSSDQSVKVDKSESGDWHCTASWKTHSGSVWRVTWAH PEF GQVLASCSFDRTAAVWEEIVGESNDKLRGQSHWVKRTTLVDSRTSVTDVKFAPKHMGLMLATCSADGIVR IYEAPDVMNLSQWSLQHEISCKLSCISWNPSSRAHSPMIAVGSDSSPNAMAKVQIFEYNENTRKYA KAETLMTVTDPVHDIAFAPNLGRSFHILAIATKDVRIFTLKPVRKELTSSGGPTKFEIHIVAQFDNHNSQ VWRVSWNITGTVLASSGDDGCVRLWKANYMDNWKCTGILKGNGSPVNGSSQQGTSNPSLGSTIPSLQN SL NGSSAGRKHS TR TRPLEQKLISEEDLAANDILDYKDDDDKV
Tag:	C-Myc/DDK
Predicted MW:	39.5 kDa
Concentration:	>0.05 µg/µL as determined by microplate BCA method
Purity:	> 80% as determined by SDS-PAGE and Coomassie blue staining
Buffer:	25 mM Tris-HCl, 100 mM glycine, pH 7.3, 10% glycerol
Preparation:	Recombinant protein was captured through anti-DDK affinity column followed by conventional chromatography steps.
Note:	For testing in cell culture applications, please filter before use. Note that you may experience some loss of protein during the filtration process.
Storage:	Store at -80°C.
Stability:	Stable for 12 months from the date of receipt of the product under proper storage and handling conditions. Avoid repeated freeze-thaw cycles.


[View online »](#)

RefSeq: [NP_112493](#)
Locus ID: 81929
UniProt ID: [Q96EE3](#)
RefSeq Size: 3513
Cytogenetics: 18p11.21
RefSeq ORF: 1080
Synonyms: SEC13L; Seh1; SEH1A; SEH1B

Summary: The protein encoded by this gene is part of a nuclear pore complex, Nup107-160. This protein contains WD repeats and shares 34% amino acid identity with yeast Seh1 and 30% identity with yeast Sec13. All constituents of the Nup107-160 complex, including this protein, specifically localize to kinetochores in mitosis. Two alternatively spliced transcript variants encoding distinct isoforms have been found for this gene. [provided by RefSeq, Jul 2008]

Product images:



Coomassie blue staining of purified SEH1L protein (Cat# [TP304536]). The protein was produced from HEK293T cells transfected with SEH1L cDNA clone (Cat# [RC204536]) using MegaTran 2.0 (Cat# [TT210002]).