

## Product datasheet for TP304536

### SEH1L (NM\_031216) Human Recombinant Protein

#### Product data:

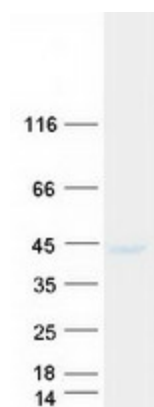
Product Type:	Recombinant Proteins
Description:	Recombinant protein of human SEH1-like ( <i>S. cerevisiae</i> ) (SEH1L), transcript variant 2, 20 µg
Species:	Human
Expression Host:	HEK293T
Expression cDNA Clone or AA Sequence:	>RC204536 protein sequence <span style="color: red;">Red</span> =Cloning site <span style="color: green;">Green</span> =Tags(s)  MFVARSAADHKDLIHDSFDFHGRMATCSSDQSVKVDKSESGDWHCTASWKTHSGSVWRVTWAH PEF GQVLASCSFDRTAAVWEEIVGESNDKLRGQSHWVKRTTLVDSRTSVTDVKFAPKHMGLMLATCSADGIVR IYEAPDVMNLSQWSLQHEISCKLSCISWNPSSRAHSPMIAVGSDSSPNAMAKVQIFEYNENTRKYA KAETLMTVTDPVHDIAFAPNLGRSFHILAIATKDVRIFTLKPVRKELTSSGGPTKFEIHIVAQFDNHNSQ VWRVSWNITGTVLASSGDDGCVRLWKANYMDNWKCTGILKGNPSPVNGSSQQGTSPNPSLGSTIPSLQN SL NGSSAGRKHS  <span style="color: red;">TR</span> <span style="color: green;">TRPLEQKLISEEDLAANDILDYKDDDDKV</span>
Tag:	C-Myc/DDK
Predicted MW:	39.5 kDa
Concentration:	>0.05 µg/µL as determined by microplate BCA method
Purity:	> 80% as determined by SDS-PAGE and Coomassie blue staining
Buffer:	25 mM Tris-HCl, 100 mM glycine, pH 7.3, 10% glycerol
Preparation:	Recombinant protein was captured through anti-DDK affinity column followed by conventional chromatography steps.
Note:	For testing in cell culture applications, please filter before use. Note that you may experience some loss of protein during the filtration process.
Storage:	Store at -80°C.
Stability:	Stable for 12 months from the date of receipt of the product under proper storage and handling conditions. Avoid repeated freeze-thaw cycles.


[View online »](#)

**RefSeq:** NP\_112493  
**Locus ID:** 81929  
**UniProt ID:** Q96EE3  
**RefSeq Size:** 3513  
**Cytogenetics:** 18p11.21  
**RefSeq ORF:** 1080  
**Synonyms:** SEC13L; Seh1; SEH1A; SEH1B

**Summary:** The protein encoded by this gene is part of a nuclear pore complex, Nup107-160. This protein contains WD repeats and shares 34% amino acid identity with yeast Seh1 and 30% identity with yeast Sec13. All constituents of the Nup107-160 complex, including this protein, specifically localize to kinetochores in mitosis. Two alternatively spliced transcript variants encoding distinct isoforms have been found for this gene. [provided by RefSeq, Jul 2008]

### Product images:



Coomassie blue staining of purified SEH1L protein (Cat# TP304536). The protein was produced from HEK293T cells transfected with SEH1L cDNA clone (Cat# [RC204536]) using MegaTran 2.0 (Cat# [TT210002]).