

## Product datasheet for **TP304531**

### CENPH (NM\_022909) Human Recombinant Protein

#### Product data:

Product Type:	Recombinant Proteins
Description:	Recombinant protein of human centromere protein H (CENPH), 20 µg
Species:	Human
Expression Host:	HEK293T
Expression cDNA Clone or AA Sequence:	>RC204531 protein sequence <b>Red</b> =Cloning site <b>Green</b> =Tags(s)
	MEEQPQMQDADEPADSGGEGRAGGPPQVAGAQAACSEDRMTLLLRLRAQTKQQLLEYKSMVDASEEKTPE QIMQEKQIEAKIEDLENEIEEVKVAFEIKKLALDRMRLSTALKKNLEKISRQSSVLMDNMKHLLLENKLI MKSQQESWDLEEKLLDIRKKRLQLKQASESKLLEIQTEKNKQKIDLDSMENSERIKIIRQNLQMEIKITT VIQHVFNLILGSKVNWAE DPALKEIVLQLEKNVDMM
	<b>TRTRPLEQKLISEEDLAANDILDYKDDDDKV</b>
Tag:	C-Myc/DDK
Predicted MW:	28.3 kDa
Concentration:	>0.05 µg/µL as determined by microplate BCA method
Purity:	> 80% as determined by SDS-PAGE and Coomassie blue staining
Buffer:	25 mM Tris-HCl, 100 mM glycine, pH 7.3, 10% glycerol
Preparation:	Recombinant protein was captured through anti-DDK affinity column followed by conventional chromatography steps.
Note:	For testing in cell culture applications, please filter before use. Note that you may experience some loss of protein during the filtration process.
Storage:	Store at -80°C.
Stability:	Stable for 12 months from the date of receipt of the product under proper storage and handling conditions. Avoid repeated freeze-thaw cycles.
RefSeq:	<a href="#">NP_075060</a>
Locus ID:	64946
UniProt ID:	<a href="#">Q9H3R5</a> , <a href="#">A0A0S2Z5T0</a>



[View online >](#)

RefSeq Size: 1405

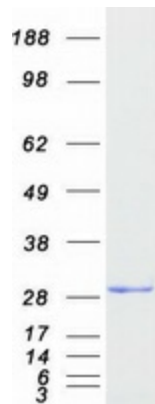
Cytogenetics: 5q13.2

RefSeq ORF: 741

**Summary:** Centromere and kinetochore proteins play a critical role in centromere structure, kinetochore formation, and sister chromatid separation. The protein encoded by this gene colocalizes with inner kinetochore plate proteins CENP-A and CENP-C in both interphase and metaphase. It localizes outside of centromeric heterochromatin, where CENP-B is localized, and inside the kinetochore corona, where CENP-E is localized during prometaphase. It is thought that this protein can bind to itself, as well as to CENP-A, CENP-B or CENP-C. Multimers of the protein localize constitutively to the inner kinetochore plate and play an important role in the organization and function of the active centromere-kinetochore complex. [provided by RefSeq, Jul 2008]

**Protein Families:** Druggable Genome

### Product images:



Coomassie blue staining of purified CENPH protein (Cat# TP304531). The protein was produced from HEK293T cells transfected with CENPH cDNA clone (Cat# [RC204531]) using MegaTran 2.0 (Cat# [TT210002]).