

Product datasheet for **TP304518M**

Epac1 (RAPGEF3) (NM_006105) Human Recombinant Protein

Product data:

Product Type:	Recombinant Proteins
Description:	Recombinant protein of human Rap guanine nucleotide exchange factor (GEF) 3 (RAPGEF3), transcript variant 2, 100 µg
Species:	Human
Expression Host:	HEK293T
Expression cDNA Clone or AA Sequence:	>RC204518 protein sequence Red =Cloning site Green =Tags(s)

MKVGWPGESCWQVGLPVEDSPALGAPRVGALPDWVEGTLLNMVLRMRHRPRSCSYQLLLEHQRPSCIQG
LRWTPLTNSEESLDFSESLEQASTERVLRAGRQLHRHLLATCPNLIRDRKYHLRLYRQCCSGRELVDGIL
ALGLGVHSRSQVVGICQVLLDEGALCHVKHDWAFQDRDAQFYRFPGPPEPEPVGTHEMEEELAEAVALLSQ
RGPDALLTVALRKPPGQRTDEELDIFEELLHIKAVAHLSNSVKRELAAVLLFEPHSAKAGTVLFSQGDKG
TSWYIIWKGSVNVVTHGKGLVTTLHEGDDFGQLALVNDAPRAATIILREDNCHFLRVKQDFNRIIKDVE
AKTMRLEEHGKVVVLERASQGAGPSRPPTPGRNRYTVMSTPEKILELLEAMGPDSSAHDPTETFLSD
FLLTHRVMPSAQLCAALLHHFHVEPAGGSEQERSTYVCNKRQQLRLVSQWVALYGSMLHTDPVATSFL
QKLSDLVGRDTRLSNLLREQWPERRRCHRENGCGNASPQMKARNLPVWLPNQDEPLPGSSCAIQVGDKV
PYDICRPDHSVLTQLPVTASVREVMAALAQEDGWTGQVLVKNVNSAGDAIGLQPDARGVATSLGLNERL
FVNPQEVHELIPHPDQLGPTVGSAEGLDLVSAKDLAQQLTDHDWLSFNLSIHQVELIHVYVLPQHLRDVT
TANLERFMRRFNEHQYVATELCLCPVGPRAQLLRKFIKLAHLKEQKNLNSFFAVMFGLSNSAISRLA
HTWERLPHKVRKLYSALERLLDPSWNHRVYRLALAKLSPVVPFMPPLLLKDMTFIHEGNHTLVENLINF
KMRMMARAARMLHHCRRSHNPVPLSPLRSRVSHLHEDSQVARISTCSEQLSTRSPASTWAYVQQLKVIDN
QRELSRLSRELEP

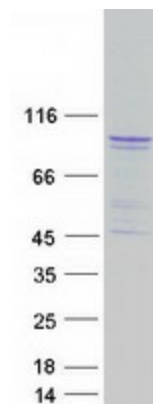
TRTRPLEQKLISEEDLAANDILDYKDDDDKV

Tag:	C-Myc/DDK
Predicted MW:	99.2 kDa
Concentration:	>0.05 µg/µL as determined by microplate BCA method
Purity:	> 80% as determined by SDS-PAGE and Coomassie blue staining
Buffer:	25 mM Tris-HCl, 100 mM glycine, pH 7.3, 10% glycerol



[View online »](#)

Preparation:	Recombinant protein was captured through anti-DDK affinity column followed by conventional chromatography steps.
Note:	For testing in cell culture applications, please filter before use. Note that you may experience some loss of protein during the filtration process.
Storage:	Store at -80°C.
Stability:	Stable for 12 months from the date of receipt of the product under proper storage and handling conditions. Avoid repeated freeze-thaw cycles.
RefSeq:	NP_006096
Locus ID:	10411
UniProt ID:	O95398 , Q99777
RefSeq Size:	5773
Cytogenetics:	12q13.11
RefSeq ORF:	2772
Synonyms:	bcm910; CAMP-GEFI; EPAC; EPAC1; HSU79275
Summary:	Guanine nucleotide exchange factor (GEF) for RAP1A and RAP2A small GTPases that is activated by binding cAMP. Through simultaneous binding of PDE3B to RAPGEF3 and PIK3R6 is assembled in a signaling complex in which it activates the PI3K gamma complex and which is involved in angiogenesis. Plays a role in the modulation of the cAMP-induced dynamic control of endothelial barrier function through a pathway that is independent on Rho-mediated signaling. Required for the actin rearrangement at cell-cell junctions, such as stress fibers and junctional actin.[UniProtKB/Swiss-Prot Function]
Protein Pathways:	Leukocyte transendothelial migration, Long-term potentiation

Product images:

Coomassie blue staining of purified RAPGEF3 protein (Cat# [TP304518]). The protein was produced from HEK293T cells transfected with RAPGEF3 cDNA clone (Cat# [RC204518]) using MegaTran 2.0 (Cat# [TT210002]).