

## Product datasheet for **TP304518**

### Epac1 (RAPGEF3) (NM\_006105) Human Recombinant Protein

#### Product data:

**Product Type:** Recombinant Proteins  
**Description:** Recombinant protein of human Rap guanine nucleotide exchange factor (GEF) 3 (RAPGEF3), transcript variant 2, 20 µg  
**Species:** Human  
**Expression Host:** HEK293T  
**Expression cDNA Clone or AA Sequence:** >RC204518 protein sequence  
**Red**=Cloning site **Green**=Tags(s)

MKVGWPGESCWQVGLPVEDSPALGAPRVGALPDWVEGTLLNMVLRMRHRPRSCSYQLLLEHQRPSCIQG  
LRWTPLTNSEESLDFSESLEQASTERVLRAGRQLHRHLLATCPNLIRDRKYHLRLYRQCCSGRELVDGIL  
ALGLGVHSRSQVVGICQVLLDEGALCHVKHDWAFQDRDAQFYRFPGPPEPEPVGTHEMEEELAEAVALLSQ  
RGPDALLTVALRKPPGQRTDEELDIFEELLHIKAVAHLSNSVKRELAAVLLFEPHSAKAGTVLFSQGDKG  
TSWYIIWKGSVNVVTHGKGLVTTLHEGDDFGQLALVNDAPRAATIILREDNCHFLRVDKQDFNRIIKDVE  
AKTMRLEEHGKVVVLERASQGAGPSRPPTPGRNRYTVMSTPEKILELLEAMGPDSSAHDPTETFLSD  
FLLTHRVFMPSAQLCAALLHHFHVPEAGGSEQERSTYVCNKRQQLRLVSQWVALYGSMLHTDPVATSFL  
QKLSDLVGRDTRLSNLLREQWPERRRCHRENGCGNASPQMKARNLPVWLPNQDEPLPGSSCAIQVGDKV  
PYDICRPDHSVLTQLPVTASVREVMAALAQEDGWTGQVLVKNVNSAGDAIGLQPDARGVATSLGLNERL  
FVNPQEVHELIPHPDQLGPTVGSAEGLDLVSAKDLAQQLTDHDWLSFNLSIHQVELIHVYVLPQHLRDVT  
TANLERFMRRFNEHQYVATELCLCPVGPRAQLLRKFIKLAHLKEQKNLNSFFAVMFGLSNSAISRLA  
HTWERLPHKVRKLYSALERLLDPSWNHRVYRLALAKLSPPVIPFMPPLLLKDMTFIHEGNHTLVENLINF  
KMRMMARAARMLHHCRRSHNPVPLSPLRSRVSHLHEDSQVARISTCSEQLSTRSPASTWAYVQQLKVIDN  
QRELSRLSRELEP

**TRTRPLEQKLISEEDLAANDILDYKDDDDKV**

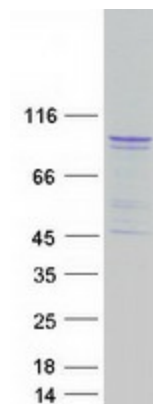
**Tag:** C-Myc/DDK  
**Predicted MW:** 99.2 kDa  
**Concentration:** >0.05 µg/µL as determined by microplate BCA method  
**Purity:** > 80% as determined by SDS-PAGE and Coomassie blue staining  
**Buffer:** 25 mM Tris-HCl, 100 mM glycine, pH 7.3, 10% glycerol



[View online »](#)

<b>Preparation:</b>	Recombinant protein was captured through anti-DDK affinity column followed by conventional chromatography steps.
<b>Note:</b>	For testing in cell culture applications, please filter before use. Note that you may experience some loss of protein during the filtration process.
<b>Storage:</b>	Store at -80°C.
<b>Stability:</b>	Stable for 12 months from the date of receipt of the product under proper storage and handling conditions. Avoid repeated freeze-thaw cycles.
<b>RefSeq:</b>	<a href="#">NP_006096</a>
<b>Locus ID:</b>	10411
<b>UniProt ID:</b>	<a href="#">O95398</a> , <a href="#">Q99777</a>
<b>RefSeq Size:</b>	5773
<b>Cytogenetics:</b>	12q13.11
<b>RefSeq ORF:</b>	2772
<b>Synonyms:</b>	bcm910; CAMP-GEFI; EPAC; EPAC1; HSU79275
<b>Summary:</b>	Guanine nucleotide exchange factor (GEF) for RAP1A and RAP2A small GTPases that is activated by binding cAMP. Through simultaneous binding of PDE3B to RAPGEF3 and PIK3R6 is assembled in a signaling complex in which it activates the PI3K gamma complex and which is involved in angiogenesis. Plays a role in the modulation of the cAMP-induced dynamic control of endothelial barrier function through a pathway that is independent on Rho-mediated signaling. Required for the actin rearrangement at cell-cell junctions, such as stress fibers and junctional actin.[UniProtKB/Swiss-Prot Function]
<b>Protein Pathways:</b>	Leukocyte transendothelial migration, Long-term potentiation

### Product images:



Coomassie blue staining of purified RAPGEF3 protein (Cat# TP304518). The protein was produced from HEK293T cells transfected with RAPGEF3 cDNA clone (Cat# [RC204518]) using MegaTran 2.0 (Cat# [TT210002]).