

Product datasheet for **TP304503M**

MITD1 (NM_138798) Human Recombinant Protein

Product data:

Product Type:	Recombinant Proteins
Description:	Recombinant protein of human MIT, microtubule interacting and transport, domain containing 1 (MITD1), 100 µg
Species:	Human
Expression Host:	HEK293T
Expression cDNA Clone or AA Sequence:	>RC204503 protein sequence Red =Cloning site Green =Tags(s) MAKSGLRQDPQSTAAATVLKRAVELDSESRYQPALVCYQEGIDLLLQVLKGTKDNTKRCNLREKISKYMD RAENIKKYLDQEKEDGKYHKQIKIEENATGFSYESLFREYLNETHVTEWIEDPYIRHHTHQLYNFLRFCEM LIKRPCKVKTIHLLTSLDEGIEQVQQSRGLQEIEESLRSHGVLLLEVQYSSSIHDREIRFNNGWMIKIGRG LDYFKKPQSRFSLGYCDFDLRPCHETTVDIFHKHHTKNI TR TRPLEQKLISEEDLAANDILDYKDDDDKV
Tag:	C-Myc/DDK
Predicted MW:	29.1 kDa
Concentration:	>0.05 µg/µL as determined by microplate BCA method
Purity:	> 80% as determined by SDS-PAGE and Coomassie blue staining
Buffer:	25 mM Tris-HCl, 100 mM glycine, pH 7.3, 10% glycerol
Preparation:	Recombinant protein was captured through anti-DDK affinity column followed by conventional chromatography steps.
Note:	For testing in cell culture applications, please filter before use. Note that you may experience some loss of protein during the filtration process.
Storage:	Store at -80°C.
Stability:	Stable for 12 months from the date of receipt of the product under proper storage and handling conditions. Avoid repeated freeze-thaw cycles.
RefSeq:	<u>NP_620153</u>
Locus ID:	129531


[View online »](#)

UniProt ID: [Q8WV92](#)

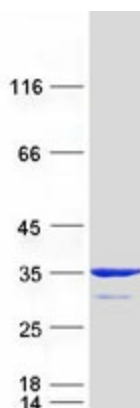
RefSeq Size: 963

Cytogenetics: 2q11.2

RefSeq ORF: 747

Summary: Abscission, the separation of daughter cells at the end of cytokinesis, is effected by endosomal sorting complexes required for transport III (ESCRT-III). The protein encoded by this gene functions as a homodimer, with the N-termini binding to a subset of ESCRT-III subunits and the C-termini binding to membranes. The encoded protein regulates ESCRT-III activity and is required for proper cytokinesis. Several transcript variants encoding different isoforms have been found for this gene. [provided by RefSeq, Feb 2016]

Product images:



Coomassie blue staining of purified MITD1 protein (Cat# [TP304503]). The protein was produced from HEK293T cells transfected with MITD1 cDNA clone (Cat# [RC204503]) using MegaTran 2.0 (Cat# [TT210002]).