

Product datasheet for **TP304487M**

SLC1A4 (NM_003038) Human Recombinant Protein

Product data:

Product Type:	Recombinant Proteins
Description:	Recombinant protein of human solute carrier family 1 (glutamate/neutral amino acid transporter), member 4 (SLC1A4), transcript variant 1, 100 µg
Species:	Human
Expression Host:	HEK293T
Expression cDNA Clone or AA Sequence:	>RC204487 protein sequence Red =Cloning site Green =Tags(s)

MEKSNETNGYLDSAQAGPAAGPGAPGTAAGRARRCAGFLRRQALVLLTVSGVLGAGLGAALRGLSLSRT
QVTYLAFPGEMLLRMLRMILPLVCSLVSGAASLDASCLGRLGGIAVAYFGLTTLSASALAVAFIHK
PGSGAQLQSSDLGLEDSGPPVPKETVDSFLDLARNLFPSNLVVAARFRTYATDYKVVTQNSSGNVTHE
KIPIGTEIEGMNILGLVLFALVLGVALKKGSEGEDLIRFFNSLNEATMVLVSWIMWVYPVGMIFLVGSK
IVEMKDIIVLVTSLGKYIFASILGHVIHGGIVLPLIYFVFRKNPFRLLGLLAPFATAFATCSSSATLP
SMMKCIEENNGVDKRISRFILPIGATVNM DGAAIFQCVAAVFIAQLNNVELNAGQIFTILVTATASSVGA
AGVPAGGVLTIAIILEAIGLPTHDLPLILAVDWIVDRTTTTVNVVEGDALGAGILHHLNQQATKKGEQELA
EVKVEAIPNCKSEETSPLVTHQNPAGPVASAPELESKESVL

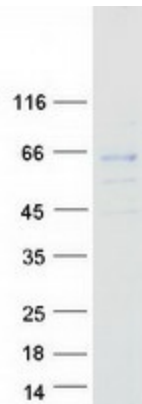
TRTRPLEQKLISEEDLAANDILDYKDDDDKV

Tag:	C-Myc/DDK
Predicted MW:	55.5 kDa
Concentration:	>0.05 µg/µL as determined by microplate BCA method
Purity:	> 80% as determined by SDS-PAGE and Coomassie blue staining
Buffer:	25 mM Tris-HCl, 100 mM glycine, pH 7.3, 10% glycerol
Preparation:	Recombinant protein was captured through anti-DDK affinity column followed by conventional chromatography steps.
Note:	For testing in cell culture applications, please filter before use. Note that you may experience some loss of protein during the filtration process.
Storage:	Store at -80°C.



[View online »](#)

Stability:	Stable for 12 months from the date of receipt of the product under proper storage and handling conditions. Avoid repeated freeze-thaw cycles.
RefSeq:	<u>NP_003029</u>
Locus ID:	6509
UniProt ID:	<u>P43007</u>
RefSeq Size:	4611
Cytogenetics:	2p14
RefSeq ORF:	1596
Synonyms:	ASCT1; SATT; SPATCCM
Summary:	The protein encoded by this gene is a sodium-dependent neutral amino acid transporter for alanine, serine, cysteine, and threonine. Defects in this gene have been associated with developmental delay, microcephaly, and intellectual disability. [provided by RefSeq, Jan 2017]
Protein Families:	Druggable Genome, Transmembrane

Product images:

Coomassie blue staining of purified SLC1A4 protein (Cat# [TP304487]). The protein was produced from HEK293T cells transfected with SLC1A4 cDNA clone (Cat# [RC204487]) using MegaTran 2.0 (Cat# [TT210002]).