

## Product datasheet for **TP304487**

### SLC1A4 (NM\_003038) Human Recombinant Protein

#### Product data:

**Product Type:** Recombinant Proteins

**Description:** Recombinant protein of human solute carrier family 1 (glutamate/neutral amino acid transporter), member 4 (SLC1A4), transcript variant 1, 20 µg

**Species:** Human

**Expression Host:** HEK293T

**Expression cDNA Clone or AA Sequence:** >RC204487 protein sequence  
**Red**=Cloning site **Green**=Tags(s)

MEKSNETNGYLDSAQAGPAAGPGAPGTAAGRARRCAGFLRRQALVLLTVSGVLGAGLGAALRGLSLSRT  
QVTYLAFPGEMLLRMLRMILPLVCSLVSGAASLDASCLGRLGGIAVAYFGLTTLSASALAVAFIHK  
PGSGAQLQSSDLGLEDSGPPVPKETVDSFLDLARNLFPSNLVVAARFRTYATDYKVVTQNSSGNVTHE  
KIPIGTEIEGMNILGLVLFALVLGVALKKLGSEGEDLIRFFNSLNEATMVLVSWIMWVYPVGMIFLVGSK  
IVEMKDIIVLVTSLGKYIFASILGHVIHGGIVLPLIYFVFRKNPFRLLGLLAPFATAFATCSSSATLP  
SMMKCIEENNGVDKRISRFILPIGATVNM DGAAIFQCVA AVFIAQLNNVELNAGQIFTILVTATASSVGA  
AGVPAGGVLTIAIILEAIGLPTHDLPLILAVDWIVDRTTTTVNVVEGDALGAGILHHLNQQATKKGEQELA  
EVKVEAIPNCKSEETSPLVTHQNPAGPVASAPELESKESVL

**TRTRPLEQKLISEEDLAANDILDYKDDDDKV**

**Tag:** C-Myc/DDK

**Predicted MW:** 55.5 kDa

**Concentration:** >0.05 µg/µL as determined by microplate BCA method

**Purity:** > 80% as determined by SDS-PAGE and Coomassie blue staining

**Buffer:** 25 mM Tris-HCl, 100 mM glycine, pH 7.3, 10% glycerol

**Preparation:** Recombinant protein was captured through anti-DDK affinity column followed by conventional chromatography steps.

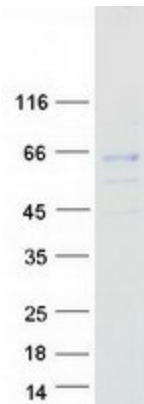
**Note:** For testing in cell culture applications, please filter before use. Note that you may experience some loss of protein during the filtration process.

**Storage:** Store at -80°C.



[View online »](#)

<b>Stability:</b>	Stable for 12 months from the date of receipt of the product under proper storage and handling conditions. Avoid repeated freeze-thaw cycles.
<b>RefSeq:</b>	<u>NP_003029</u>
<b>Locus ID:</b>	6509
<b>UniProt ID:</b>	<u>P43007</u>
<b>RefSeq Size:</b>	4611
<b>Cytogenetics:</b>	2p14
<b>RefSeq ORF:</b>	1596
<b>Synonyms:</b>	ASCT1; SATT; SPATCCM
<b>Summary:</b>	The protein encoded by this gene is a sodium-dependent neutral amino acid transporter for alanine, serine, cysteine, and threonine. Defects in this gene have been associated with developmental delay, microcephaly, and intellectual disability. [provided by RefSeq, Jan 2017]
<b>Protein Families:</b>	Druggable Genome, Transmembrane

**Product images:**

Coomassie blue staining of purified SLC1A4 protein (Cat# TP304487). The protein was produced from HEK293T cells transfected with SLC1A4 cDNA clone (Cat# [RC204487]) using MegaTran 2.0 (Cat# [TT210002]).