

## Product datasheet for **TP304480M**

### Syntrophin alpha 1 (SNTA1) (NM\_003098) Human Recombinant Protein

#### Product data:

Product Type:	Recombinant Proteins
Description:	Recombinant protein of human syntrophin, alpha 1 (dystrophin-associated protein A1, 59kDa, acidic component) (SNTA1), 100 µg
Species:	Human
Expression Host:	HEK293T
Expression cDNA Clone or AA Sequence:	>RC204480 protein sequence <b>Red</b> =Cloning site <b>Green</b> =Tags(s)

MASGRRAPRTGLLELRAGAGSGAGGERWQRVLLSLAEDVLTVSPADGDPGPEPGAPREQEPAQLNGAAEP  
GAGPPQLPEALLQRRRVTVRKADAGGLGISIKGGRENKMPILISKIFKGLAADQTEALFVGDAILSUNG  
EDLSSATHDEAVQLKKTGKEVLEVKYMKDVSPYFKNSTGGTSVWDSPPASPLQRQPSSPGPTPRNFS  
EAKHMSLKMAYVSKRCTPNDEPRYLEICSADGQDTLFLRAKDEASRSWATAIQAQVNTLTPRVKDELQ  
ALLAATSTAGSQDIKQIGWLTEQLPSGGTAPTLLTEKELLYLSLPETREALSRPARTAPLIATRLVH  
SGPSKGSVPYDAELSFALRTGTRHGVDTHLFSVESPQELAAWTRQLVDGCHRAAEGVQEVSTACTWNGRP  
CSLSVHIDKGFTLWAAEPGAARAVLLRQPFELQMSDDGASLLFLDFGGAEGEIQLDLHSCPRTIVFII  
HSFLSAKVTRLGLLA

**SGPTRTRPLEQKLISEEDLAANDILDYKDDDDKV**

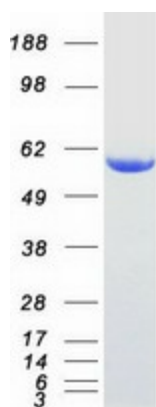
Tag:	C-Myc/DDK
Predicted MW:	53.7 kDa
Concentration:	>0.05 µg/µL as determined by microplate BCA method
Purity:	> 80% as determined by SDS-PAGE and Coomassie blue staining
Buffer:	25 mM Tris-HCl, 100 mM glycine, pH 7.3, 10% glycerol
Preparation:	Recombinant protein was captured through anti-DDK affinity column followed by conventional chromatography steps.
Note:	For testing in cell culture applications, please filter before use. Note that you may experience some loss of protein during the filtration process.
Storage:	Store at -80°C.



[View online »](#)

Stability:	Stable for 12 months from the date of receipt of the product under proper storage and handling conditions. Avoid repeated freeze-thaw cycles.
RefSeq:	<a href="#">NP_003089</a>
Locus ID:	6640
UniProt ID:	<a href="#">Q13424</a>
RefSeq Size:	2345
Cytogenetics:	20q11.21
RefSeq ORF:	1515
Synonyms:	dj1187J4.5; LQT12; SNT1; TACIP1
Summary:	Syntrophins are cytoplasmic peripheral membrane scaffold proteins that are components of the dystrophin-associated protein complex. This gene is a member of the syntrophin gene family and encodes the most common syntrophin isoform found in cardiac tissues. The N-terminal PDZ domain of this syntrophin protein interacts with the C-terminus of the pore-forming alpha subunit (SCN5A) of the cardiac sodium channel Nav1.5. This protein also associates cardiac sodium channels with the nitric oxide synthase-PMCA4b (plasma membrane Ca-ATPase subtype 4b) complex in cardiomyocytes. This gene is a susceptibility locus for Long-QT syndrome (LQT) - an inherited disorder associated with sudden cardiac death from arrhythmia - and sudden infant death syndrome (SIDS). This protein also associates with dystrophin and dystrophin-related proteins at the neuromuscular junction and alters intracellular calcium ion levels in muscle tissue. [provided by RefSeq, Jan 2013]

### Product images:



Coomassie blue staining of purified SNTA1 protein (Cat# [TP304480]). The protein was produced from HEK293T cells transfected with SNTA1 cDNA clone (Cat# [RC204480]) using MegaTran 2.0 (Cat# [TT210002]).