

## Product datasheet for **TP304463M**

### Carboxypeptidase B (CPB1) (NM\_001871) Human Recombinant Protein

#### Product data:

Product Type:	Recombinant Proteins
Description:	Recombinant protein of human carboxypeptidase B1 (tissue) (CPB1), 100 µg
Species:	Human
Expression Host:	HEK293T
Expression cDNA Clone or AA Sequence:	>RC204463 protein sequence <b>Red</b> =Cloning site <b>Green</b> =Tags(s)

MLALLLVLTVALASAHHGGEHFEGEKVFRVNVEDENHINIIRELASTTQIDFWKPDSVTQIKPHSTVDFR  
VKAEDTVTVENVLKQNELQYKVLISNLRNVWEAQFDSRVVRATGHSYKYNKWETIEAWTQQVATENPALI  
SRSVIGTTFEGRAIYLLKVGKAGQNKPAIFMDCGFHAREWISPAFCQWVREAVRITYGREIQVTELLDKL  
DFYVLPVLNIDGYIYTWTKSRFWRKTRSTHTGSSCIGTDPNRFDAGWCEIGASRNPCDETYCGPAAESE  
KETKALADFIRNKLSSIKAYLTIHSYSQMMIYPYSYAYKLGENNAELNALAKATVKELASLHGTKYTYGP  
GATTIYPAAGSDDWAYDQGIRYSFTFELRDTGRYGFLLPESQIRATCEETFLAIKYVASVLEHLY

**TR**TRPLEQKLISEEDLAANDILDYKDDDDKV

Tag:	C-Myc/DDK
Predicted MW:	45.9 kDa
Concentration:	>0.05 µg/µL as determined by microplate BCA method
Purity:	> 80% as determined by SDS-PAGE and Coomassie blue staining
Buffer:	25 mM Tris-HCl, 100 mM glycine, pH 7.3, 10% glycerol
Preparation:	Recombinant protein was captured through anti-DDK affinity column followed by conventional chromatography steps.
Note:	For testing in cell culture applications, please filter before use. Note that you may experience some loss of protein during the filtration process.
Storage:	Store at -80°C.
Stability:	Stable for 12 months from the date of receipt of the product under proper storage and handling conditions. Avoid repeated freeze-thaw cycles.
RefSeq:	<a href="#">NP_001862</a>
Locus ID:	1360



[View online »](#)

UniProt ID: [P15086](#)

RefSeq Size: 1473

Cytogenetics: 3q24

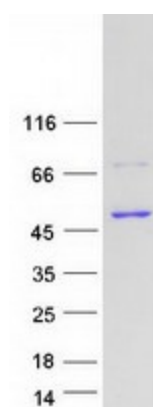
RefSeq ORF: 1251

Synonyms: CPB; PASP; PCPB

**Summary:** Three different procarboxypeptidases A and two different procarboxypeptidases B have been isolated. The B1 and B2 forms differ from each other mainly in isoelectric point. Carboxypeptidase B1 is a highly tissue-specific protein and is a useful serum marker for acute pancreatitis and dysfunction of pancreatic transplants. It is not elevated in pancreatic carcinoma. [provided by RefSeq, Jul 2008]

**Protein Families:** Druggable Genome, Protease, Secreted Protein

### Product images:



Coomassie blue staining of purified CPB1 protein (Cat# [TP304463]). The protein was produced from HEK293T cells transfected with CPB1 cDNA clone (Cat# [RC204463]) using MegaTran 2.0 (Cat# [TT210002]).