

Product datasheet for TP304450L

Cleavage stimulation factor 2 (CSTF2) (NM_001325) Human Recombinant Protein

Product data:

Product Type: Recombinant Proteins

Description: Recombinant protein of human cleavage stimulation factor, 3' pre-RNA, subunit 2, 64kDa (CSTF2), 1 mg

Species: Human

Expression Host: HEK293T

Expression >RC204450 protein sequence

cDNA Clone or Red=Cloning site Green=Tags(s)

AA Sequence:

MAGLTVRDPVDRSLRSVFGNIPYEATEEQLKIDIFSEVGPVVSFRLVVDRETGKPKGYGFCEYQDQETA
LSAMRNLANGREFSGRALRVDNAASEKNKEELKSLGTGAPVIESPYGETISPEDAPESISKAVASLPPEQM
FELMKQMKLVCVQNSPQEARNMLLQNPQLAYALLQAQVVMRIVDPEIALKILHRQTNIPTLIAGNPQPVHG
AGPGSGSNVSMNQNPQAPQAQSLGGMHVNGAPPLMQASMGGVPAPGQMPAAVTGPGPGSLAPGGGMQA
QVGMPSGSPVSMERGVPMQDPRAAMQRGSLPANVPTPRGLLGDAPNDPRGGTLLSVTGEVEPRGYLGPP
HQGPPMHHPGHESRGGPPHELRRGGPLPEPRPLMAEPRGPMLDQRGPPLDGRGGRDPRGIDARGMEARAM
EARGLDARGLEARAMEARAMEARAMEARAMEARAMEARMEVRGMEARGMDTRGPVPGPRGPIPSGMQGPSPINM
GAVVPQGSRQVPVMQGTGMQGASIQGGSQPGGFSPGQNQVTPQDHEKAALIMQVLQLTADQIAMLPPEQR
QSILILKEQIQKSTGAP

TRTRPLEQKLISEEDLAANDILDYKDDDDKV

Tag: C-Myc/DDK

Predicted MW: 60.8 kDa

Concentration: >0.05 µg/µL as determined by microplate BCA method

Purity: > 80% as determined by SDS-PAGE and Coomassie blue staining

Buffer: 25 mM Tris-HCl, 100 mM glycine, pH 7.3, 10% glycerol

Preparation: Recombinant protein was captured through anti-DDK affinity column followed by conventional chromatography steps.

Note: For testing in cell culture applications, please filter before use. Note that you may experience some loss of protein during the filtration process.

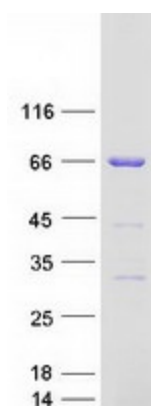
Storage: Store at -80°C.



[View online »](#)

Stability:	Stable for 12 months from the date of receipt of the product under proper storage and handling conditions. Avoid repeated freeze-thaw cycles.
RefSeq:	NP_001316
Locus ID:	1478
UniProt ID:	P33240
RefSeq Size:	2027
Cytogenetics:	Xq22.1
RefSeq ORF:	1731
Synonyms:	CstF-64
Summary:	This gene encodes a nuclear protein with an RRM (RNA recognition motif) domain. The protein is a member of the cleavage stimulation factor (CSTF) complex that is involved in the 3' end cleavage and polyadenylation of pre-mRNAs. Specifically, this protein binds GU-rich elements within the 3'-untranslated region of mRNAs. [provided by RefSeq, Jul 2008]

Product images:



Coomassie blue staining of purified CSTF2 protein (Cat# [TP304450]). The protein was produced from HEK293T cells transfected with CSTF2 cDNA clone (Cat# [RC204450]) using MegaTran 2.0 (Cat# [TT210002]).