

## Product datasheet for **TP304433M**

### UBE2Q2 (NM\_173469) Human Recombinant Protein

#### Product data:

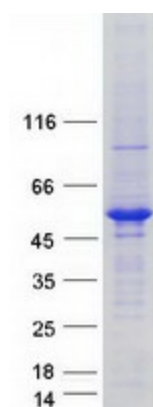
Product Type:	Recombinant Proteins
Description:	Recombinant protein of human ubiquitin-conjugating enzyme E2Q family member 2 (UBE2Q2), transcript variant 1, 100 µg
Species:	Human
Expression Host:	HEK293T
Expression cDNA Clone or AA Sequence:	>RC204433 representing NM_173469 <b>Red</b> =Cloning site <b>Green</b> =Tags(s)
	<p>MSVSGLKAELKFLASIFDKNHERFRIVSWKLDLHCQFLVPQQGSPHSLPPPLTLHCNITESYPSSSPIW FVDEPNLTSVLERLEDTKNNNLLRQQLKWLICELCSLYNLPKHLDEVMLDQPLPTGQNGTTEVTSEE EEEEEMAEDIEDLDHYEMKEEEPISGKKSEDEGIEKENLAILEKIRKTQRQDHLNGAVSGSVQASDRLM KELRDIYRSQSYKTGIYSVELINDSLYDWHVKLQKVDPSPLHSDLQILKEKEGIEYILLNFSFKDNFPF DPPFVRVWLPVLSGGYVLGGGALCMELLTKQGWSSAYSIESVIMQINATLVKGGKARVQFGANKNQYNLAR AQQSYNSIVQIHEKNGWYTPPKEDG</p> <p><b>TRTRPLEQKLISEEDLAANDILDYKDDDDKV</b></p>
Tag:	C-Myc/DDK
Predicted MW:	42.6 kDa
Concentration:	>0.05 µg/µL as determined by microplate BCA method
Purity:	> 80% as determined by SDS-PAGE and Coomassie blue staining
Buffer:	25 mM Tris-HCl, 100 mM glycine, pH 7.3, 10% glycerol
Preparation:	Recombinant protein was captured through anti-DDK affinity column followed by conventional chromatography steps.
Note:	For testing in cell culture applications, please filter before use. Note that you may experience some loss of protein during the filtration process.
Storage:	Store at -80°C.
Stability:	Stable for 12 months from the date of receipt of the product under proper storage and handling conditions. Avoid repeated freeze-thaw cycles.
RefSeq:	<u><a href="#">NP_775740</a></u>



[View online »](#)

Locus ID:	92912
UniProt ID:	<a href="#">Q8WVN8</a>
RefSeq Size:	2939
Cytogenetics:	15q24.2
RefSeq ORF:	1125
Summary:	Accepts ubiquitin from the E1 complex and catalyzes its covalent attachment to other proteins. In vitro catalyzes 'Lys-48'-linked polyubiquitination.[UniProtKB/Swiss-Prot Function]
Protein Pathways:	Ubiquitin mediated proteolysis

### Product images:



Coomassie blue staining of purified UBE2Q2 protein (Cat# [TP304433]). The protein was produced from HEK293T cells transfected with UBE2Q2 cDNA clone (Cat# [RC204433]) using MegaTran 2.0 (Cat# [TT210002]).