

## Product datasheet for **TP304433L**

### UBE2Q2 (NM\_173469) Human Recombinant Protein

#### Product data:

**Product Type:** Recombinant Proteins

**Description:** Recombinant protein of human ubiquitin-conjugating enzyme E2Q family member 2 (UBE2Q2), transcript variant 1, 1 mg

**Species:** Human

**Expression Host:** HEK293T

**Expression cDNA Clone or AA Sequence:** >RC204433 representing NM\_173469  
**Red**=Cloning site **Green**=Tags(s)

MSVSGLKAELKFLASIFDKNHERFRIVSWKLDLHCQFLVPQQGSPHSLPPPLTLHCNITESYPSSSPIW  
FVDEPNLTSVLERLEDTKNNNLLRQQLKWLICELCSLYNLPKHLDEVMLDQPLPTGQNGTTEVTSEE  
EEEEEMAEDIEDLDHYEMKEEPEISGKKSEDEGIEKENLAILEKIRKTQRQDHLNGAVSGSVQASDRLM  
KELRDIYRSQSYKTGIYSVELINDSLYDWHVKLQKVDPSPLHSDLQILKEKEGIEYILLNFSFKDNFPF  
DPPFVRVWLPVLSGGYVLGGGALCMELLTKQGWSSAYSIESVIMQINATLVKGGKARVQFGANKNQYNLAR  
AQQSYNSIVQIHEKNGWYTPPKEDG

**TRTRPLEQKLISEEDLAANDILDYKDDDDKV**

**Tag:** C-Myc/DDK

**Predicted MW:** 42.6 kDa

**Concentration:** >0.05 µg/µL as determined by microplate BCA method

**Purity:** > 80% as determined by SDS-PAGE and Coomassie blue staining

**Buffer:** 25 mM Tris-HCl, 100 mM glycine, pH 7.3, 10% glycerol

**Preparation:** Recombinant protein was captured through anti-DDK affinity column followed by conventional chromatography steps.

**Note:** For testing in cell culture applications, please filter before use. Note that you may experience some loss of protein during the filtration process.

**Storage:** Store at -80°C.

**Stability:** Stable for 12 months from the date of receipt of the product under proper storage and handling conditions. Avoid repeated freeze-thaw cycles.

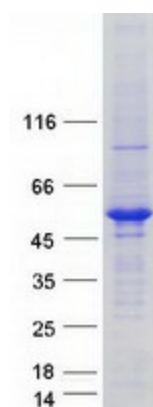
**RefSeq:** [NP\\_775740](#)



[View online »](#)

Locus ID:	92912
UniProt ID:	<a href="#">Q8WVN8</a>
RefSeq Size:	2939
Cytogenetics:	15q24.2
RefSeq ORF:	1125
Summary:	Accepts ubiquitin from the E1 complex and catalyzes its covalent attachment to other proteins. In vitro catalyzes 'Lys-48'-linked polyubiquitination.[UniProtKB/Swiss-Prot Function]
Protein Pathways:	Ubiquitin mediated proteolysis

### Product images:



Coomassie blue staining of purified UBE2Q2 protein (Cat# [TP304433]). The protein was produced from HEK293T cells transfected with UBE2Q2 cDNA clone (Cat# [RC204433]) using MegaTran 2.0 (Cat# [TT210002]).