

Product datasheet for **TP304423M**

Kallikrein 7 (KLK7) (NM_005046) Human Recombinant Protein

Product data:

Product Type:	Recombinant Proteins
Description:	Recombinant protein of human kallikrein-related peptidase 7 (KLK7), transcript variant 1, 100 µg
Species:	Human
Expression Host:	HEK293T
Expression cDNA Clone or AA Sequence:	>RC204423 protein sequence Red =Cloning site Green =Tags(s)

MARLLLLPLQILLLSLALETAGEEAAQGDKIIDGAPCARGSHPWQVALLSGNQLHCGGVLVNERWWLTAAH
CKMNEYTVHLGSDTLGDRRAQRIKASKSFRHPGYSTQTHVNDLMLVKLNSQARLSSMVKKVRLPSRCEPP
GTTCTVSGWGTSTSPDVTFPSDLMCVDVKLISPQDCTKVYKDLENSMLCAGIPDSKKNACNGDSGGPLV
CRGTLQGLVSWGTFPWGQPNDPGVYTQVCKFTKWINDTMKKHR

TRTRPLEQKLISEEDLAANDILDYKDDDDKV

Tag:	C-Myc/DDK
Predicted MW:	27.3 kDa
Concentration:	>0.05 µg/µL as determined by microplate BCA method
Purity:	> 80% as determined by SDS-PAGE and Coomassie blue staining
Buffer:	25 mM Tris-HCl, 100 mM glycine, pH 7.3, 10% glycerol
Preparation:	Recombinant protein was captured through anti-DDK affinity column followed by conventional chromatography steps.
Note:	For testing in cell culture applications, please filter before use. Note that you may experience some loss of protein during the filtration process.
Storage:	Store at -80°C.
Stability:	Stable for 12 months from the date of receipt of the product under proper storage and handling conditions. Avoid repeated freeze-thaw cycles.
RefSeq:	<u>NP_005037</u>
Locus ID:	5650



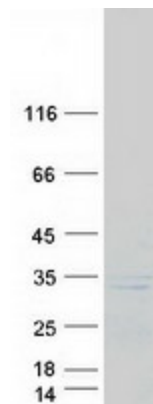
[View online »](#)

UniProt ID:	P49862 , A0A024R4H6 , B4DHX9
RefSeq Size:	2104
Cytogenetics:	19q13.41
RefSeq ORF:	759
Synonyms:	hK7; PRSS6; SCCE

Summary: This gene encodes a member of the kallikrein subfamily of serine proteases. These enzymes have diverse physiological functions and many kallikrein genes are biomarkers for cancer. The encoded protein has chymotrypsin-like activity and plays a role in the proteolysis of intercellular cohesive structures that precedes desquamation, the shedding of the outermost layer of the epidermis. The encoded protein may play a role in cancer invasion and metastasis, and increased expression of this gene is associated with unfavorable prognosis and progression of several types of cancer. Polymorphisms in this gene may play a role in the development of atopic dermatitis. Alternatively spliced transcript variants encoding multiple isoforms have been observed for this gene, which is one of fifteen kallikrein subfamily members located in a gene cluster on chromosome 19. [provided by RefSeq, May 2011]

Protein Families: Druggable Genome, Secreted Protein

Product images:



Coomassie blue staining of purified KLK7 protein (Cat# [TP304423]). The protein was produced from HEK293T cells transfected with KLK7 cDNA clone (Cat# [RC204423]) using MegaTran 2.0 (Cat# [TT210002]).