

## Product datasheet for **TP304423L**

### Kallikrein 7 (KLK7) (NM\_005046) Human Recombinant Protein

#### Product data:

Product Type:	Recombinant Proteins
Description:	Recombinant protein of human kallikrein-related peptidase 7 (KLK7), transcript variant 1, 1 mg
Species:	Human
Expression Host:	HEK293T
Expression cDNA Clone or AA Sequence:	>RC204423 protein sequence <b>Red</b> =Cloning site <b>Green</b> =Tags(s)  MARSLLLPLQILLLSLALETAGEEAAQGDKIIDGAPCARGSHPWQVALLSGNQLHCGGVLVNERWVLTAAH CKMNEYTVHLGSDTLGDRRAQRIKASKSFRHPGYSTQTHVNDLMLVKLNSQARLSSMVKKVRLPSRCEP P GTTCTVSGWGTTTSPDVTFPDLMCDVVKLISPQDCTKVYKDLENSMLCAGIPDSKKNACNGDSGGPLV CRGTLQGLVSWGTFPWGQPNDPGVYTQVCKFTKWINDTMKKHR  <b>TRTRPLEQKLISEEDLAANDILDYKDDDDKV</b>
Tag:	C-Myc/DDK
Predicted MW:	27.3 kDa
Concentration:	>0.05 µg/µL as determined by microplate BCA method
Purity:	> 80% as determined by SDS-PAGE and Coomassie blue staining
Buffer:	25 mM Tris-HCl, 100 mM glycine, pH 7.3, 10% glycerol
Preparation:	Recombinant protein was captured through anti-DDK affinity column followed by conventional chromatography steps.
Note:	For testing in cell culture applications, please filter before use. Note that you may experience some loss of protein during the filtration process.
Storage:	Store at -80°C.
Stability:	Stable for 12 months from the date of receipt of the product under proper storage and handling conditions. Avoid repeated freeze-thaw cycles.
RefSeq:	<u><a href="#">NP_005037</a></u>
Locus ID:	5650



[View online »](#)

UniProt ID: [P49862](#)

RefSeq Size: 2104

Cytogenetics: 19q13.41

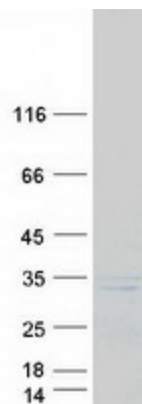
RefSeq ORF: 759

Synonyms: hK7; PRSS6; SCCE

**Summary:** This gene encodes a member of the kallikrein subfamily of serine proteases. These enzymes have diverse physiological functions and many kallikrein genes are biomarkers for cancer. The encoded protein has chymotrypsin-like activity and plays a role in the proteolysis of intercellular cohesive structures that precedes desquamation, the shedding of the outermost layer of the epidermis. The encoded protein may play a role in cancer invasion and metastasis, and increased expression of this gene is associated with unfavorable prognosis and progression of several types of cancer. Polymorphisms in this gene may play a role in the development of atopic dermatitis. Alternatively spliced transcript variants encoding multiple isoforms have been observed for this gene, which is one of fifteen kallikrein subfamily members located in a gene cluster on chromosome 19. [provided by RefSeq, May 2011]

**Protein Families:** Druggable Genome, Secreted Protein

### Product images:



Coomassie blue staining of purified KLK7 protein (Cat# [TP304423]). The protein was produced from HEK293T cells transfected with KLK7 cDNA clone (Cat# [RC204423]) using MegaTran 2.0 (Cat# [TT210002]).