

## Product datasheet for TP304420

### CHIC2 (NM\_012110) Human Recombinant Protein

#### Product data:

Product Type:	Recombinant Proteins
Description:	Recombinant protein of human cysteine-rich hydrophobic domain 2 (CHIC2), 20 µg
Species:	Human
Expression Host:	HEK293T
Expression cDNA Clone or AA Sequence:	>RC204420 protein sequence <b>Red</b> =Cloning site <b>Green</b> =Tags(s)
	MADFDEIYEEEEDEERALEEQLLKYSPPVWVRGSGHVTVFGLSNKFESEFPSSLTGKVAPEEFKASINR VNSCLKKNLPVNRWLLCGCLCCCTLGCSMWVVICLSKRTRRSIEKLEWENNRLYHKLCLHWRLSKRK CETNNMMEYVILIEFLPKTPIFRPD
	<b>TRTRPLEQKLISEEDLAANDILDYKDDDDKV</b>
Tag:	C-Myc/DDK
Predicted MW:	19.1 kDa
Concentration:	>0.05 µg/µL as determined by microplate BCA method
Purity:	> 80% as determined by SDS-PAGE and Coomassie blue staining
Buffer:	25 mM Tris-HCl, 100 mM glycine, pH 7.3, 10% glycerol
Preparation:	Recombinant protein was captured through anti-DDK affinity column followed by conventional chromatography steps.
Note:	For testing in cell culture applications, please filter before use. Note that you may experience some loss of protein during the filtration process.
Storage:	Store at -80°C.
Stability:	Stable for 12 months from the date of receipt of the product under proper storage and handling conditions. Avoid repeated freeze-thaw cycles.
RefSeq:	<a href="#">NP_036242</a>
Locus ID:	26511
UniProt ID:	<a href="#">Q9UKJ5</a>
RefSeq Size:	1178



[View online »](#)

Cytogenetics: 4q12

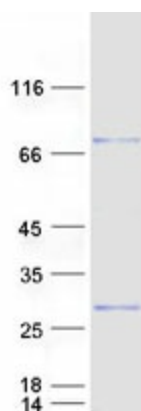
RefSeq ORF: 495

Synonyms: BTL

**Summary:** This gene encodes a member of the CHIC family of proteins. The encoded protein contains a cysteine-rich hydrophobic (CHIC) motif, and is localized to vesicular structures and the plasma membrane. This gene is associated with some cases of acute myeloid leukemia. [provided by RefSeq, Jul 2008]

**Protein Families:** Druggable Genome, Transmembrane

### Product images:



Coomassie blue staining of purified CHIC2 protein (Cat# TP304420). The protein was produced from HEK293T cells transfected with CHIC2 cDNA clone (Cat# [RC204420]) using MegaTran 2.0 (Cat# [TT210002]).