

Product datasheet for TP304416L

SGK3 (NM_013257) Human Recombinant Protein

Product data:

Product Type:	Recombinant Proteins
Description:	Recombinant protein of human serum/glucocorticoid regulated kinase family, member 3 (SGK3), transcript variant 1, 1 mg
Species:	Human
Expression Host:	HEK293T
Expression cDNA Clone or AA Sequence:	>RC204416 protein sequence Red=Cloning site Green=Tags(s)

MQRDHTMDYKESCPSVSIPSSDEHREKKKRFTVYKVLVSVGRSEWVFRRYAEFDKLYNTLKKQFPAMAL
KIPAKRIFGDNFDPDFIKQRRAGLNEFIQNLVRYPELYNHPDVRAFLQMDSPKHQSDPSEDEDERSSQKL
HSTSQNINLGPSGNPHAKPTDFDFLKVIGKGSFGKVLAKRKLKDGKFYAVKVLQKKIVLNRKEQKHIMAE
RNVLLKNVKHPFLVGLHYFSQTTEKLYFVLDVNGGELFFHLQRERSFPEHRARFYAAEIASALGYLHSI
KIVYRDLKPENILLDSVGHVLTDFGLCKEGIAISDTTTCGTPEYLAPEVIRKQPYDNTVDWWCLGAV
LYEMLYGLPPFYCRDVAEMYDNILHKPLSLRPGVSLTAWSSILEELLEKDRQNRLGAKEDFLEIQNHPPFE
SLSWADLVQKKIPPPFNPVAGPDDIRNFDTAFTETVPYSVCVSSDYSIVNASVLEADDAFVGFSYAPP
SEDLFL

TRTRPLEQKLISEEDLAANDILDYKDDDDKV

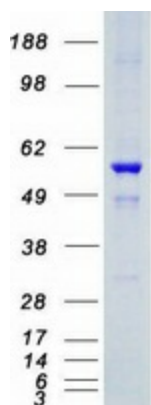
Tag:	C-Myc/DDK
Predicted MW:	56.9 kDa
Concentration:	>0.05 µg/µL as determined by microplate BCA method
Purity:	> 80% as determined by SDS-PAGE and Coomassie blue staining
Buffer:	25 mM Tris-HCl, 100 mM glycine, pH 7.3, 10% glycerol
Preparation:	Recombinant protein was captured through anti-DDK affinity column followed by conventional chromatography steps.
Note:	For testing in cell culture applications, please filter before use. Note that you may experience some loss of protein during the filtration process.
Storage:	Store at -80°C.



[View online »](#)

Stability:	Stable for 12 months from the date of receipt of the product under proper storage and handling conditions. Avoid repeated freeze-thaw cycles.
RefSeq:	NP_037389
Locus ID:	23678
UniProt ID:	Q96BR1 , A0A024R807 , Q53EW6 , Q5H9Q5
RefSeq Size:	4206
Cytogenetics:	8q13.1
RefSeq ORF:	1488
Synonyms:	CISK; SGK2; SGKL
Summary:	This gene is a member of the Ser/Thr protein kinase family and encodes a phosphoprotein with a PX (phox homology) domain. The protein phosphorylates several target proteins and has a role in neutral amino acid transport and activation of potassium and chloride channels. Alternate transcriptional splice variants, encoding different isoforms, have been characterized. [provided by RefSeq, Jul 2008]
Protein Families:	Druggable Genome, Protein Kinase

Product images:



Coomassie blue staining of purified SGK3 protein (Cat# [TP304416]). The protein was produced from HEK293T cells transfected with SGK3 cDNA clone (Cat# [RC204416]) using MegaTran 2.0 (Cat# [TT210002]).