

## Product datasheet for **TP304415**

### **GDPD2 (NM\_017711) Human Recombinant Protein**

#### **Product data:**

|  |   |
|--|---|
| <b>Product Type:</b>                         | Recombinant Proteins  |
| <b>Description:</b>                          | Recombinant protein of human glycerophosphodiester phosphodiesterase domain containing 2 (GDPD2), 20 µg |
| <b>Species:</b>                              | Human   |
| <b>Expression Host:</b>                      | HEK293T   |
| <b>Expression cDNA Clone or AA Sequence:</b> | >RC204415 protein sequence<br><b>Red</b> =Cloning site <b>Green</b> =Tags(s)                            |

MAESPGCCSVWARCLHCLYSCHWRKCPREERMQTSKDCIWFGLLFLTFLLSLSWLYIGLVLLNDLHNFNE  
FLFRRWGHWMDWSLAFLLVISLLVITYASLLLLLVALLLRLCRQPLHLHSLHKVLLLLLIMLLVAAGLVGLDI  
QWQQEWHSRLVSLQATAPFLHIGAAAGIALLAWPVADTFYRIHRRGPKILLLLFFGVVLYIPLAPLCIS  
SPCIMEPRDLPPKPGLVGHGAPMLAPENTLMSLRKTAECGATVFETDVMVSSDGPFLMHDEHLSRTTN  
VASVFPTRITAHSSDFSWTELKRLNAGSWFLERRPFWGAKPLAGPDQKEAESQTPALEELLEEEAALNL  
SIMFDLRRPPQNHTYYDTFVIQTLETVLNARVPQAMVFWLPDEDNANVQRRAPGMRQIYGRQGGNRTERP  
QFLNLPYQDLPLLDIKALHKDNVSVNLFVVKPWLFSLLWCAGVDSVTTNDCQLLQQMRYPIWLITPQTY  
LIIVVITNCVSTMLLLWTFLLQRRFVKKRGKTGLETAVLLTRINNFMMME

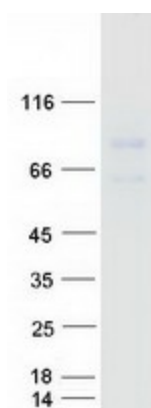
**TRTRPLEQKLISEEDLAANDILDYKDDDDKV**

|                       |  |
|-----------------------|--|
| <b>Tag:</b>           | C-Myc/DDK  |
| <b>Predicted MW:</b>  | 61.5 kDa   |
| <b>Concentration:</b> | >0.05 µg/µL as determined by microplate BCA method   |
| <b>Purity:</b>        | > 80% as determined by SDS-PAGE and Coomassie blue staining  |
| <b>Buffer:</b>        | 25 mM Tris-HCl, 100 mM glycine, pH 7.3, 10% glycerol   |
| <b>Preparation:</b>   | Recombinant protein was captured through anti-DDK affinity column followed by conventional chromatography steps.                                     |
| <b>Note:</b>          | For testing in cell culture applications, please filter before use. Note that you may experience some loss of protein during the filtration process. |
| <b>Storage:</b>       | Store at -80°C.  |



[View online »](#)

|                          |  |
|--------------------------|--|
| <b>Stability:</b>        | Stable for 12 months from the date of receipt of the product under proper storage and handling conditions. Avoid repeated freeze-thaw cycles.  |
| <b>RefSeq:</b>           | <u><a href="#">NP_060181</a></u>   |
| <b>Locus ID:</b>         | 54857  |
| <b>UniProt ID:</b>       | <u><a href="#">Q9HCC8</a></u>  |
| <b>RefSeq Size:</b>      | 2290   |
| <b>Cytogenetics:</b>     | Xq13.1   |
| <b>RefSeq ORF:</b>       | 1617   |
| <b>Synonyms:</b>         | GDE3; OBDPF  |
| <b>Summary:</b>          | This gene encodes a member of the glycerophosphodiester phosphodiesterase enzyme family. The encoded protein hydrolyzes glycerophosphoinositol to produce inositol 1-phosphate and glycerol. This protein may have a role in osteoblast differentiation and growth. Alternate splicing results in multiple transcript variants. [provided by RefSeq, Jan 2010] |
| <b>Protein Families:</b> | Transmembrane  |

**Product images:**

Coomassie blue staining of purified GDPD2 protein (Cat# TP304415). The protein was produced from HEK293T cells transfected with GDPD2 cDNA clone (Cat# [RC204415]) using MegaTran 2.0 (Cat# [TT210002]).