

## Product datasheet for **TP304409M**

### TMEM143 (NM\_018273) Human Recombinant Protein

#### Product data:

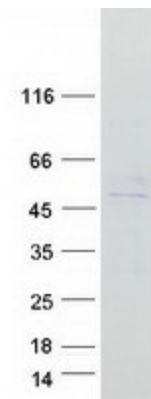
Product Type:	Recombinant Proteins
Description:	Recombinant protein of human transmembrane protein 143 (TMEM143), 100 µg
Species:	Human
Expression Host:	HEK293T
Expression cDNA Clone or AA Sequence:	>RC204409 protein sequence <b>Red</b> =Cloning site <b>Green</b> =Tags(s)
	<p>MTVELWLRRLRGKGLAMLHVTRGVWGSVRVWVPLLPALLGPPRALSSLAAKMGEYRKMWNPREPRDWAQQY  RERFIPFSKEQLLRLLIQEFHSSPAEKAALFAHVDVDFCTLFHYHQILARLQALYDPINPDRELDQPS  LTDPPQRLSNEQEVLRALPELLAQANFSPLESDTLAYALVHHPQDEVQVTNLDQYVYIHFALGQRVGG  MPLKSSVGSRRGFFTKLPPAERRYFKRVLAARTKRGLVLSFKDTPLEGLEQLLPELVKVRTPTLQRAL  LNLMLVWVGVAIFVNVGMWVLTDLKVATSLLLLLFAIFMGLRASKMFGQRRSAQALELAHMLYRSTSN  SELLSALALRAQDEHTKEALLAHSFLARRPGGTQGSPEETSRLRSEVENWLLAKSGCEVTFNGTRALAH  LQALTPSMGLYPPPGFPKLDVPVAPITSEPPQATPSSNIS</p> <p><b>TRTRPLEQKLISEEDLAANDILDYKDDDDKV</b></p>
Tag:	C-Myc/DDK
Predicted MW:	51.5 kDa
Concentration:	>0.05 µg/µL as determined by microplate BCA method
Purity:	> 80% as determined by SDS-PAGE and Coomassie blue staining
Buffer:	25 mM Tris-HCl, 100 mM glycine, pH 7.3, 10% glycerol
Preparation:	Recombinant protein was captured through anti-DDK affinity column followed by conventional chromatography steps.
Note:	For testing in cell culture applications, please filter before use. Note that you may experience some loss of protein during the filtration process.
Storage:	Store at -80°C.
Stability:	Stable for 12 months from the date of receipt of the product under proper storage and handling conditions. Avoid repeated freeze-thaw cycles.
RefSeq:	<a href="#">NP_060743</a>



[View online »](#)

Locus ID: 55260  
UniProt ID: [Q96AN5](#)  
RefSeq Size: 2265  
Cytogenetics: 19q13.33  
RefSeq ORF: 1377  
Protein Families: Transmembrane

### Product images:



Coomassie blue staining of purified TMEM143 protein (Cat# [TP304409]). The protein was produced from HEK293T cells transfected with TMEM143 cDNA clone (Cat# [RC204409]) using MegaTran 2.0 (Cat# [TT210002]).