

Product datasheet for **TP304408L**

AK3 (NM_016282) Human Recombinant Protein

Product data:

Product Type: Recombinant Proteins

Description: Recombinant protein of human adenylate kinase 3 (AK3), nuclear gene encoding mitochondrial protein, 1 mg

Species: Human

Expression Host: HEK293T

Expression cDNA Clone or AA Sequence: >RC204408 protein sequence
Red=Cloning site **Green**=Tags(s)

MGASARLLRAVIMGAPGSGKGTVSSRITTHFELKHLSSGDLLRDNMLRGTEIGVLAKAFIDQGKLIIPDDV
MTRLALHELKNTQYSWLLDGFRTLPQAEALDRAYQIDTVINLNVPFVIKQRLTARWIHPASGRVYNI
EFNPPKTVGIDDLTGEPLIQREDDKPETVIKRLKAYEDQTKPVLEYYQKKGVLETFSGTETNKIWPYVYA
FLQTKVPQRSQKASVTP

TRTRPLE**Q**KLISEEDLAANDILDYKDDDDKV

Tag: C-Myc/DDK

Predicted MW: 25.4 kDa

Concentration: >0.05 µg/µL as determined by microplate BCA method

Purity: > 80% as determined by SDS-PAGE and Coomassie blue staining

Buffer: 25 mM Tris-HCl, 100 mM glycine, pH 7.3, 10% glycerol

Preparation: Recombinant protein was captured through anti-DDK affinity column followed by conventional chromatography steps.

Note: For testing in cell culture applications, please filter before use. Note that you may experience some loss of protein during the filtration process.

Storage: Store at -80°C.

Stability: Stable for 12 months from the date of receipt of the product under proper storage and handling conditions. Avoid repeated freeze-thaw cycles.

RefSeq: [NP_057366](#)

Locus ID: 50808



[View online »](#)

UniProt ID: [Q9UIJ7](#), [Q7Z4Y4](#)

RefSeq Size: 4333

Cytogenetics: 9p24.1

RefSeq ORF: 681

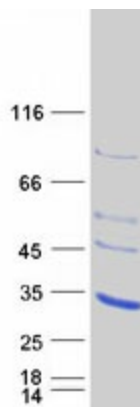
Synonyms: AK3L1; AK6; AKL3L; AKL3L1; FIX

Summary: The protein encoded by this gene is a GTP:ATP phosphotransferase that is found in the mitochondrial matrix. Several transcript variants encoding a few different isoforms have been found for this gene. [provided by RefSeq, Dec 2010]

Protein Families: Druggable Genome

Protein Pathways: Pyrimidine metabolism

Product images:



Coomassie blue staining of purified AK3 protein (Cat# [TP304408]). The protein was produced from HEK293T cells transfected with AK3 cDNA clone (Cat# [RC204408]) using MegaTran 2.0 (Cat# [TT210002]).