

Product datasheet for **TP304407**

beta TRCP2 (FBXW11) (NM_033644) Human Recombinant Protein

Product data:

Product Type:	Recombinant Proteins
Description:	Recombinant protein of human F-box and WD repeat domain containing 11 (FBXW11), transcript variant 2, 20 µg
Species:	Human
Expression Host:	HEK293T
Expression cDNA Clone or AA Sequence:	>RC204407 protein sequence Red =Cloning site Green =Tags(s)

MEPDSVIEDKTIELMNTSVMEDQNEDESPKKNTLWQISNGTSSVIVSRKRPSEGNQKEKDLCIKYFDQW
SESDQVEFVEHLISRMCHYQHGHSYLPMLQRDFITALPEQGLDHAENILSYLDARSLCAAELVCKE
WQRVISEGMLWKKLIERMVRTDPLWKGLSERRGWDQYLFKNRPTDGPPNSFYRSLYPKIIQDIETIESNW
RCGRHNLQRIQCRSENSKGVYCLQYDDEKIISGLRDNISIKIWDKTSLECLKVLTGHTGSVLCLQYDERVI
VTGSSDSTVRVWDVNTGEVLNLIHHNEAVLHLRFSNGLMVTCSKDRSIAVWDMASATDITLRRVLVGH
AAVNVDFFDDKYIVSASGDRTIKVWSTSTCEVRTLNGHKGRIACLQYRDRLVSGSSDNTIRLWDIECG
ACLRVLEGHEELVRCIRFDNKRIVSGAYDGKIKVWDLQAALDPRAPASTLCLRTLVEHSGRVFRLQFDEF
QIISSSHDDTILIWDFLNVPPSAQNETRSPSRITYISR

TRTRPLEQKLISEEDLAANDILDYKDDDDKV

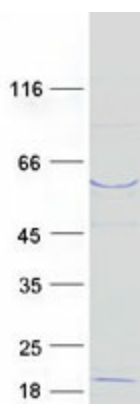
Tag:	C-Myc/DDK
Predicted MW:	60.7 kDa
Concentration:	>0.05 µg/µL as determined by microplate BCA method
Purity:	> 80% as determined by SDS-PAGE and Coomassie blue staining
Buffer:	25 mM Tris-HCl, 100 mM glycine, pH 7.3, 10% glycerol
Preparation:	Recombinant protein was captured through anti-DDK affinity column followed by conventional chromatography steps.
Note:	For testing in cell culture applications, please filter before use. Note that you may experience some loss of protein during the filtration process.
Storage:	Store at -80°C.



[View online »](#)

Stability:	Stable for 12 months from the date of receipt of the product under proper storage and handling conditions. Avoid repeated freeze-thaw cycles.
RefSeq:	NP_387448
Locus ID:	23291
UniProt ID:	Q9UKB1
RefSeq Size:	4536
Cytogenetics:	5q35.1
RefSeq ORF:	1587
Synonyms:	BTRC2; BTRCP2; FBW1B; Fbw11; FBXW1B; Hos; NEDJED
Summary:	This gene encodes a member of the F-box protein family which is characterized by an approximately 40 amino acid motif, the F-box. The F-box proteins constitute one of the four subunits of ubiquitin protein ligase complex called SCFs (SKP1-cullin-F-box), which function in phosphorylation-dependent ubiquitination. The F-box proteins are divided into 3 classes: Fbws containing WD-40 domains, Fbls containing leucine-rich repeats, and Fbxs containing either different protein-protein interaction modules or no recognizable motifs. The protein encoded by this gene belongs to the Fbws class and, in addition to an F-box, contains multiple WD40 repeats. This gene contains at least 14 exons, and its alternative splicing generates 3 transcript variants diverging at the presence/absence of two alternate exons. [provided by RefSeq, Jul 2008]
Protein Families:	Druggable Genome
Protein Pathways:	Hedgehog signaling pathway, Oocyte meiosis, Ubiquitin mediated proteolysis, Wnt signaling pathway

Product images:



Coomassie blue staining of purified FBXW11 protein (Cat# TP304407). The protein was produced from HEK293T cells transfected with FBXW11 cDNA clone (Cat# [RC204407]) using MegaTran 2.0 (Cat# [TT210002]).