

Product datasheet for **TP304406L**

GJB4 (NM_153212) Human Recombinant Protein

Product data:

Product Type:	Recombinant Proteins
Description:	Recombinant protein of human gap junction protein, beta 4, 30.3kDa (GJB4), 1 mg
Species:	Human
Expression Host:	HEK293T
Expression cDNA Clone or AA Sequence:	>RC204406 protein sequence Red =Cloning site Green =Tags(s)
	 MNWAFLLQGLLSGVNKYSTVLSRIWLSVVFIFRVLVYVWAAEEVWDDEQKDFVCNTKQPGCPNVCYDEFFP VSHVRLWALQLILVTCPSSLVVMHVAYREERERKHHLKHGPNAPSLYDNLKSKRGGGLWWTYLLSLIFKAA VDAGFLYIFHRLYKDYDMPRVVACSVVEPCPHTVDCYISRPTTEKKVFTYFMVTTAAICILLNLSEVFLVG KRCMEIFGPRHRRPRCRECLPDTCPYPVLSQGGHPEDGNSVLMKAGSAPVDAGGYP TRTRPLEQKLISEEDLAANDILDYKDDDDKV
Tag:	C-Myc/DDK
Predicted MW:	30.2 kDa
Concentration:	>0.05 µg/µL as determined by microplate BCA method
Purity:	> 80% as determined by SDS-PAGE and Coomassie blue staining
Buffer:	25 mM Tris-HCl, 100 mM glycine, pH 7.3, 10% glycerol
Preparation:	Recombinant protein was captured through anti-DDK affinity column followed by conventional chromatography steps.
Note:	For testing in cell culture applications, please filter before use. Note that you may experience some loss of protein during the filtration process.
Storage:	Store at -80°C.
Stability:	Stable for 12 months from the date of receipt of the product under proper storage and handling conditions. Avoid repeated freeze-thaw cycles.
RefSeq:	NP_694944
Locus ID:	127534
UniProt ID:	Q9NTQ9



[View online »](#)

RefSeq Size: 2840

Cytogenetics: 1p34.3

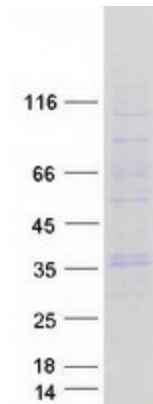
RefSeq ORF: 798

Synonyms: CX30.3; EKV; EKVP2

Summary: This gene encodes a transmembrane connexin protein that is a component of gap junctions. Mutations in this gene have been associated with erythrokeratoderma variabilis, progressive symmetric erythrokeratoderma and hearing impairment. [provided by RefSeq, Dec 2009]

Protein Families: Ion Channels: Other, Transmembrane

Product images:



Coomassie blue staining of purified GJB4 protein (Cat# [TP304406]). The protein was produced from HEK293T cells transfected with GJB4 cDNA clone (Cat# [RC204406]) using MegaTran 2.0 (Cat# [TT210002]).