

## Product datasheet for **TP304404M**

### SLP76 (LCP2) (NM\_005565) Human Recombinant Protein

#### Product data:

Product Type:	Recombinant Proteins
Description:	Recombinant protein of human lymphocyte cytosolic protein 2 (SH2 domain containing leukocyte protein of 76kDa) (LCP2), 100 µg
Species:	Human
Expression Host:	HEK293T
Expression cDNA Clone or AA Sequence:	>RC204404 protein sequence <b>Red</b> =Cloning site <b>Green</b> =Tags(s)

MALRNVPFRSEVLGWDPDSLADYFKKLNKYDCEKAVKKYHIDGARFLNLTENDIQKFKLRVPILSKLSQ  
EINKNEERRSIFTRKPVPRFPEETESHEEDNGGWSSFEEDDYESPNDQDGEDDGDYESPNEEEEEAPVE  
DDADYEPSPSNDDEALQNSILPAKPFPMNSNSMYIDRPPSGKTPQQPPVPPQRPMALPPPPAGRNHSPLP  
PPQTNHEEPSRSRNHKTAKLPAPSIDRSTKPPLDRSLAPFDREPFTLGKKPPFSDKPSIPAGRSLGEHLP  
KIQKPPLPPTTERHERSSPLPGKKPPVPHGWGPDRRENDEDDVHQRPLPQPALLPMSNTFPSRSTKPS  
PMNPLPSSHMPGAFSESNSSFPQSASLPYFSQGPSNRPPIRAEGRNFPPLPNKPRPPSPAEEENSLNE  
EWVYSYITRPEAAALRKINQDGTFLVRDSSKTTTTNPVLMVLYKDKVYNIQIRYQKESQVYLLGTGLR  
GKEDFLSVSDIIDYFRKMPLLLIDGKNRGSRYQCTLTAAAGYP

**TRTRPLEQKLISEEDLAANDILDYKDDDDKV**

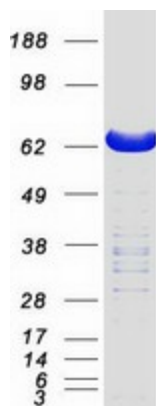
Tag:	C-Myc/DDK
Predicted MW:	60 kDa
Concentration:	>0.05 µg/µL as determined by microplate BCA method
Purity:	> 80% as determined by SDS-PAGE and Coomassie blue staining
Buffer:	25 mM Tris-HCl, 100 mM glycine, pH 7.3, 10% glycerol
Preparation:	Recombinant protein was captured through anti-DDK affinity column followed by conventional chromatography steps.
Note:	For testing in cell culture applications, please filter before use. Note that you may experience some loss of protein during the filtration process.
Storage:	Store at -80°C.



[View online »](#)

<b>Stability:</b>	Stable for 12 months from the date of receipt of the product under proper storage and handling conditions. Avoid repeated freeze-thaw cycles.
<b>RefSeq:</b>	<a href="#">NP_005556</a>
<b>Locus ID:</b>	3937
<b>UniProt ID:</b>	<a href="#">Q13094</a>
<b>RefSeq Size:</b>	2472
<b>Cytogenetics:</b>	5q35.1
<b>RefSeq ORF:</b>	1599
<b>Synonyms:</b>	IMD81; SLP-76; SLP76
<b>Summary:</b>	This gene encodes an adapter protein that acts as a substrate of the T cell antigen receptor (TCR)-activated protein tyrosine kinase pathway. The encoded protein associates with growth factor receptor bound protein 2, and is thought to play a role TCR-mediated intracellular signal transduction. A similar protein in mouse plays a role in normal T-cell development and activation. Mice lacking this gene show subcutaneous and intraperitoneal fetal hemorrhaging, dysfunctional platelets and impaired viability. [provided by RefSeq, Nov 2016]
<b>Protein Pathways:</b>	Fc epsilon RI signaling pathway, Natural killer cell mediated cytotoxicity, T cell receptor signaling pathway

### Product images:



Coomassie blue staining of purified LCP2 protein (Cat# [TP304404]). The protein was produced from HEK293T cells transfected with LCP2 cDNA clone (Cat# [RC204404]) using MegaTran 2.0 (Cat# [TT210002]).