

Product datasheet for **TP304403L**

MAP4K6 (MINK1) (NM_153827) Human Recombinant Protein

Product data:

Product Type:	Recombinant Proteins
Description:	Recombinant protein of human misshapen-like kinase 1 (zebrafish) (MINK1), transcript variant 3, 1 mg
Species:	Human
Expression Host:	HEK293T
Expression cDNA Clone or AA Sequence:	>RC204403 representing NM_153827 Red =Cloning site Green =Tags(s)

MGDPAPARSLDDIDLSALRDPAGIFELVEVGNNGTYGQVYKGRHVKTGQLAAIKVMDVTEDEEEEIKQEI
NMLKKYSHRNIATYYGAFIKKSPGNDDQLWLVMEFCGAGSVTDLVKNTKGNALKEDCIAYICREILRG
LAHLHAHKVIHRDIKQNVLLTENA EVKLVD FGVSAQLDRTVGRNRTFIGTPYWM APEVIACDENPDATY
DYRSDIWSLGITAIEMAEGAPPLCDMHPMRALFLIPRNP PRLKSKKWSKKFIDFIDTCLIKTYLSRPPT
EQLLKFPFIRDQPTERQVRIQLKDHIDRSRKKRGEKEETEYEYSGSEEEEDSHGEEGEPSSIMNVPGEST
LRREFLRLQQENKSNSEALKQQQLQQQQQRDPEAHIKHLLHQRRRIEEQKEERRRVEEQRRREREQRK
LQEKEQRRLEDMQALRREEERRQAEREQEYKRKQLEEQRQSERLQRQLQEHAYLKS LQQQQQQQLQK
QQQQQLLPGDRKPLYHYGRGMNPADKPAWAREVEERTRMNKQNSPLAKSKPGSTGPEPPIPQASPGPPG
PLSQTTPMQRVPEPQEGPHKSLVAHRVPLKPYAAPVPRSQSLQDQPTRNLAAFPASHDPDPAIPAPTATP
SARGAVIRQNSDPTSEGGPSPNPPAWVRPDNEAPPKVPQRTSSIALNTSGAGGSRPAQAVRARPRSN
SAWQIYLQRR AERGT P K P P G P P A Q P P G P P N A S S N P D L R R S D P G W E R S D S V L P A S H G H L P Q A G S L E R N R V G
ASSKLDSSPVLSPGNKAKPDDHRSRPGRPAD FVLLKERTLDEAPRPPKAMDYSSSSEEVESSEDEEEEG
EGGPAEGSRDTPGGRSDGDTDSVSTMVHDVEEITGTQPPYGGGTMMVQRTPEEERNLLHADSNGYTNLP
DVVQPSHSPTENSKGQSPPSKDGSGDYQSRGLVKAPGKSSFTMFVDLGIYQPGGSGDSIPITALVGGEGT
RLDQLQYDVRKGSVVVNPTNTRAHSETPEIRKYKRFNSEILCAALWGVNLLVGTENGLMLLDRSGQ GK
VYGLIGRRRFQQMDVLEGLNLLITISGKRNLRVYLSWLRN KILHNDPEVEKKQGWTTVGDMEGCGHYR
VKYERIKFLVIALKSSVEVYAWAPKPYHKFMAFKSFADLPHRPLLVDLTVEEQRLKVIYGSSAGFHAV
DVDSGNSYDIYIPVHIQSQITPHAIIFLPNTDGMEMLLCYEDEGVYVNTYGRIIKDVVLQWGEMPTSVAY
ICSNQIMGWGEKAIEIRSVETGHLDGVFMHKRAQLKFLCERNDKVFFASVRS GGSSQVYFMTLNRNCIM
NW

TRTRPLEQLISEEDLAANDILDYKDDDDKV

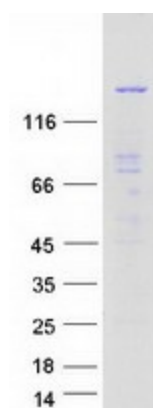
Tag:	C-Myc/DDK
Predicted MW:	149.6 kDa



[View online »](#)

Concentration:	>0.05 µg/µL as determined by microplate BCA method
Purity:	> 80% as determined by SDS-PAGE and Coomassie blue staining
Buffer:	25 mM Tris-HCl, 100 mM glycine, pH 7.3, 10% glycerol
Preparation:	Recombinant protein was captured through anti-DDK affinity column followed by conventional chromatography steps.
Note:	For testing in cell culture applications, please filter before use. Note that you may experience some loss of protein during the filtration process.
Storage:	Store at -80°C.
Stability:	Stable for 12 months from the date of receipt of the product under proper storage and handling conditions. Avoid repeated freeze-thaw cycles.
RefSeq:	NP_722549
Locus ID:	50488
UniProt ID:	Q8N4C8
RefSeq Size:	4989
Cytogenetics:	17p13.2
RefSeq ORF:	3996
Synonyms:	B55; MAP4K6; MINK; YSK2; ZC3
Summary:	This gene encodes a serine/threonine kinase belonging to the germinal center kinase (GCK) family. The protein is structurally similar to the kinases that are related to NIK and may belong to a distinct subfamily of NIK-related kinases within the GCK family. Studies of the mouse homolog indicate an up-regulation of expression in the course of postnatal mouse cerebral development and activation of the cJun N-terminal kinase (JNK) and the p38 pathways. [provided by RefSeq, Mar 2016]
Protein Families:	Druggable Genome, Protein Kinase

Product images:



Coomassie blue staining of purified MINK1 protein (Cat# [TP304403]). The protein was produced from HEK293T cells transfected with MINK1 cDNA clone (Cat# [RC204403]) using MegaTran 2.0 (Cat# [TT210002]).