

Product datasheet for **TP304391M**

SLC2A6 (NM_017585) Human Recombinant Protein

Product data:

Product Type: Recombinant Proteins

Description: Recombinant protein of human solute carrier family 2 (facilitated glucose transporter), member 6 (SLC2A6), 100 µg

Species: Human

Expression Host: HEK293T

Expression cDNA Clone or AA Sequence: >RC204391 protein sequence
Red=Cloning site **Green**=Tags(s)

MQEPLLGAEGPDYDTFPEKPPSPGDRARVGTLQNKRVFLATFAAVLGNFSGYALVYTSPVIPALERSL
DPDLHLTKSQASWFGSVFTLGAAAGGLSAMILNDLLGRKLSIMFSAVPSAAGYALMAGAHGLWMLLLGRT
LTGFAGGLTAACIPVYVSEIAPPGVIRGALGATPQLMAVFGSLSLYALGLLLPPRWLAVAGEAPVLMILL
LSFMPNSPRFLLSRGRDEEALRALAWLRGTDVDVHWEFEQIQDNVRRQSSRVSWAEARAPHVCRPITVAL
LMRLLQQLTGITPILVYLQSFIDSTAVLLPPKDDAAIVGAVRLLSVLIAALTMDLAGRKVLLFVSAAIMF
AANLTLGLYIHFGPRPLSPNSTAGLESESWGDLAQPLAAPAGYLTLPVLLATMLFIMGYAVGWGPITWLL
MSEVLPLRARGVASGLCVLASWLTAFVLTKSFLPVVSTFGLQVPPFFFAAICLVSLVFTGCCVPETKGRS
LEQIESFFRTGRRSFLR

TRTRPLEQKLISEEDLAANDILDYKDDDDKV

Tag: C-Myc/DDK

Predicted MW: 54.4 kDa

Concentration: >0.05 µg/µL as determined by microplate BCA method

Purity: > 80% as determined by SDS-PAGE and Coomassie blue staining

Buffer: 25 mM Tris-HCl, 100 mM glycine, pH 7.3, 10% glycerol

Preparation: Recombinant protein was captured through anti-DDK affinity column followed by conventional chromatography steps.

Note: For testing in cell culture applications, please filter before use. Note that you may experience some loss of protein during the filtration process.

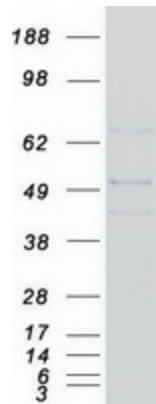
Storage: Store at -80°C.



[View online »](#)

Stability:	Stable for 12 months from the date of receipt of the product under proper storage and handling conditions. Avoid repeated freeze-thaw cycles.
RefSeq:	NP_060055
Locus ID:	11182
UniProt ID:	Q9UGQ3
RefSeq Size:	2563
Cytogenetics:	9q34.2
RefSeq ORF:	1521
Synonyms:	GLUT6; GLUT9; HSA011372
Summary:	Hexose transport into mammalian cells is catalyzed by a family of membrane proteins, including SLC2A6, that contain 12 transmembrane domains and a number of critical conserved residues.[supplied by OMIM, Jul 2002]
Protein Families:	Transmembrane

Product images:



Coomassie blue staining of purified SLC2A6 protein (Cat# [TP304391]). The protein was produced from HEK293T cells transfected with SLC2A6 cDNA clone (Cat# [RC204391]) using MegaTran 2.0 (Cat# [TT210002]).