

Product datasheet for **TP304391**

SLC2A6 (NM_017585) Human Recombinant Protein

Product data:

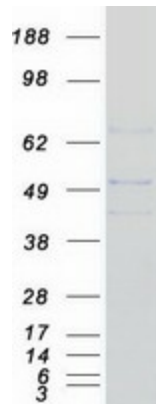
Product Type:	Recombinant Proteins
Description:	Recombinant protein of human solute carrier family 2 (facilitated glucose transporter), member 6 (SLC2A6), 20 µg
Species:	Human
Expression Host:	HEK293T
Expression cDNA Clone or AA Sequence:	>RC204391 protein sequence Red =Cloning site Green =Tags(s)
	<p>MQEPLLGAEGPDYDTFPEKPPSPGDRARVGTLQNKRVFLATFAAVLGNFSGYALVYTSPVIPALERSL DPDLHLTKSQASWFGSVFTLGAAAGGLSAMILNDLLGRKLSIMFSAVPSAAGYALMAGAHGLWMLLLGRT LTGFAGGLTAACIPVYVSEIAPPGVARGALGATPQLMAVFGSLSLYALGLLL PWRWLAVAGEAPVLMILL LSFMPNSPRFLLSRGRDEEALRALAWLRGTDVDVHWEFEQIQDNVRRQSSRVSWAEARAPHVCRPITVAL LMRLLQQLTGITPILVYLQSFIDSTAVLLPPKDDAAIVGAVRLLSVLIAALTMDLAGRKVLLFVSAAIMF AANLTLGLYIHFGPRPLSPNSTAGLESESWGDLAQPLAAPAGYLTLPVLLATMLFIMGYAVGWGPITWLL MSEVLPLRARGVASGLCVLASWLTAFVLTKSFLPVVSTFGLQVPFFFAAICLVSLVFTGCCVPETKGRS LEQIESFFRTGRRSFLR</p> <p>TRTRPLEQKLISEEDLAANDILDYKDDDDKV</p>
Tag:	C-Myc/DDK
Predicted MW:	54.4 kDa
Concentration:	>0.05 µg/µL as determined by microplate BCA method
Purity:	> 80% as determined by SDS-PAGE and Coomassie blue staining
Buffer:	25 mM Tris-HCl, 100 mM glycine, pH 7.3, 10% glycerol
Preparation:	Recombinant protein was captured through anti-DDK affinity column followed by conventional chromatography steps.
Note:	For testing in cell culture applications, please filter before use. Note that you may experience some loss of protein during the filtration process.
Storage:	Store at -80°C.



[View online »](#)

Stability:	Stable for 12 months from the date of receipt of the product under proper storage and handling conditions. Avoid repeated freeze-thaw cycles.
RefSeq:	NP_060055
Locus ID:	11182
UniProt ID:	Q9UGQ3
RefSeq Size:	2563
Cytogenetics:	9q34.2
RefSeq ORF:	1521
Synonyms:	GLUT6; GLUT9; HSA011372
Summary:	Hexose transport into mammalian cells is catalyzed by a family of membrane proteins, including SLC2A6, that contain 12 transmembrane domains and a number of critical conserved residues.[supplied by OMIM, Jul 2002]
Protein Families:	Transmembrane

Product images:



Coomassie blue staining of purified SLC2A6 protein (Cat# TP304391). The protein was produced from HEK293T cells transfected with SLC2A6 cDNA clone (Cat# [RC204391]) using MegaTran 2.0 (Cat# [TT210002]).