

## Product datasheet for **TP304358M**

### TCP1 epsilon (CCT5) (NM\_012073) Human Recombinant Protein

#### Product data:

Product Type:	Recombinant Proteins
Description:	Recombinant protein of human chaperonin containing TCP1, subunit 5 (epsilon) (CCT5), 100 µg
Species:	Human
Expression Host:	HEK293T
Expression cDNA Clone or AA Sequence:	>Peptide sequence encoded by RC204358 Blue=ORF Red=Cloning site Green=Tag(s)

MASMGTLAFDEYGRPFLLIKDQDRKSRLMGLEALKSHIMAAKAVANTMRTSLGPNGLDKMMVDDKGDVT  
VTNDGATILSMMDVDHQIAKLMVELSKSQDDEIGDGTGWWVLGALLEEAEQLLDRIHPIRIADGYE  
QAARVAIEHLDKISDSVLVDIKDTEPLIQTAKTTLGSKVNSCHRQMAEIAVNAVLTVADMERRDVF  
LIKVEGKVGGRLEDTKLIKGVIVDKDFSHQPMPKKVEDAKIAILTCFPEPPKPKTKHKL DVTSVEDYKA  
LQKYEKEKFEEMIQIKETGANLAICQWGFDDANHLLQNNLPAVRWVGGPEIELIAIATGGRIVPRF  
SELTAEKLGFAGLVQEISFGTTKDKMLVIEQCKNSRAVTIFIRGGNKMIIIEAKRSLHDALCVIRNLIR  
DNRVYGGGAAEISCALAVSQEADKCPTELEQYAMRAFADALEVIPMALSENSGMNPIQTMTEVRRARQVK  
EMNPALGIDCLHKGTNDMKQQHVIETLIGKKQQLSLATQMVVMILKIDDIRKPGESE  
TRTRPLEQKLISEEDLAANDILDYKDDDDKV

Recombinant protein using RC204358 also available, [TP304358M](#)

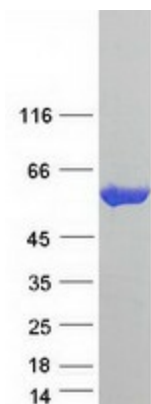
Tag:	C-Myc/DDK
Predicted MW:	59.5 kDa
Concentration:	>0.05 µg/µL as determined by microplate BCA method
Purity:	> 80% as determined by SDS-PAGE and Coomassie blue staining
Buffer:	25 mM Tris-HCl, 100 mM glycine, pH 7.3, 10% glycerol
Preparation:	Recombinant protein was captured through anti-DDK affinity column followed by conventional chromatography steps.
Note:	For testing in cell culture applications, please filter before use. Note that you may experience some loss of protein during the filtration process.
Storage:	Store at -80°C.



[View online »](#)

<b>Stability:</b>	Stable for 12 months from the date of receipt of the product under proper storage and handling conditions. Avoid repeated freeze-thaw cycles.
<b>RefSeq:</b>	<a href="#">NP_036205</a>
<b>Locus ID:</b>	22948
<b>UniProt ID:</b>	<a href="#">P48643</a> , <a href="#">V9HW37</a>
<b>RefSeq Size:</b>	3403
<b>Cytogenetics:</b>	5p15.2
<b>RefSeq ORF:</b>	1623
<b>Synonyms:</b>	CCT-epsilon; CCTE; HEL-S-69; PNAS-102; TCP-1-epsilon
<b>Summary:</b>	The protein encoded by this gene is a molecular chaperone that is a member of the chaperonin containing TCP1 complex (CCT), also known as the TCP1 ring complex (TRiC). This complex consists of two identical stacked rings, each containing eight different proteins. Unfolded polypeptides enter the central cavity of the complex and are folded in an ATP-dependent manner. The complex folds various proteins, including actin and tubulin. Mutations in this gene cause hereditary sensory and autonomic neuropathy with spastic paraplegia (HSNSP). Alternative splicing results in multiple transcript variants. Related pseudogenes have been identified on chromosomes 5 and 13. [provided by RefSeq, Apr 2015]
<b>Protein Families:</b>	Druggable Genome

### Product images:



Coomassie blue staining of purified CCT5 protein (Cat# [TP304358]). The protein was produced from HEK293T cells transfected with CCT5 cDNA clone (Cat# [RC204358]) using MegaTran 2.0 (Cat# [TT210002]).