

Product datasheet for **TP304355M**

CDC37L1 (NM_017913) Human Recombinant Protein

Product data:

Product Type:	Recombinant Proteins
Description:	Recombinant protein of human cell division cycle 37 homolog (S. cerevisiae)-like 1 (CDC37L1), 100 µg
Species:	Human
Expression Host:	HEK293T
Expression cDNA Clone or AA Sequence:	>RC204355 protein sequence Red =Cloning site Green =Tags(s)

MEQPWPPPGPWSLPRAEGEAEESDFDVPSSPRCPQLPGGGAQMYSHGIELACQKQKEFVKSSVACKWN
LAEAQQKLGSLALHNSESLDQEHAKAQTAVSELRQREEEWRQKEEALVQREKMCLWSTDAISKDVFNKSF
INQDKRKDTEDEDKSEFMQKYEQKIRHFGMLSRWDDSQRFLSDHPYLVCEETAKYLILWCFHLEAEKKG
ALMEQIAHQAVVMQFIMEMAKNCNVDPGRFCRLLFFQKAKAEEEGYFEAFKNELEAFKSRVRLYSQSQSFQ
PMTVQNHVPHSGVGSIGLLES LPQNP DYLQYSISTALCSLSNVVHKEDDEPKMMDTV

TRTRPLEQKLISEEDLAANDILDYKDDDDKV

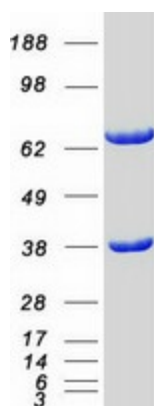
Tag:	C-Myc/DDK
Predicted MW:	38.7 kDa
Concentration:	>0.05 µg/µL as determined by microplate BCA method
Purity:	> 80% as determined by SDS-PAGE and Coomassie blue staining
Buffer:	25 mM Tris-HCl, 100 mM glycine, pH 7.3, 10% glycerol
Preparation:	Recombinant protein was captured through anti-DDK affinity column followed by conventional chromatography steps.
Note:	For testing in cell culture applications, please filter before use. Note that you may experience some loss of protein during the filtration process.
Storage:	Store at -80°C.
Stability:	Stable for 12 months from the date of receipt of the product under proper storage and handling conditions. Avoid repeated freeze-thaw cycles.
RefSeq:	NP_060383
Locus ID:	55664



[View online »](#)

UniProt ID:	Q7L3B6
RefSeq Size:	1724
Cytogenetics:	9p24.1
RefSeq ORF:	1011
Synonyms:	CDC37B; HARC
Summary:	CDC37L1 is a cytoplasmic phosphoprotein that exists in complex with HSP90 (HSPCA; MIM 140571) as well as several other proteins involved in HSP90-mediated protein folding (Scholz et al., 2001 [PubMed 11413142]).[supplied by OMIM, Mar 2008]

Product images:



Coomassie blue staining of purified CDC37L1 protein (Cat# [TP304355]). The protein was produced from HEK293T cells transfected with CDC37L1 cDNA clone (Cat# [RC204355]) using MegaTran 2.0 (Cat# [TT210002]).