

Product datasheet for **TP304348M**

CTHRC1 (NM_138455) Human Recombinant Protein

Product data:

Product Type:	Recombinant Proteins
Description:	Recombinant protein of human collagen triple helix repeat containing 1 (CTHRC1), 100 µg
Species:	Human
Expression Host:	HEK293T
Expression cDNA Clone or AA Sequence:	>RC204348 protein sequence Red =Cloning site Green =Tags(s)
	 MRPQGPAASPQRLRGLLLLLLQLPAPSSASEIPK GKQKAQLRQREVVDLYNGMCLQGPAGVPGRD GSPG ANGIPGTPGIPGRDGFKGEKGECLRESFEESWTPNYKQCSWSSLNYGIDLGKIAECTFTKMRSNSALRVL FSGSLRLKCRNACCQRWYFTFNGAEC SGPLPIEAI IYLDQGSPEMNSTINIHR TSSVEGLCEGIGAGLVD VAIWVGTCS DYPKGDASTGWNSVSR III EELPK TRTRPLEQKLISEEDLAANDILDYKDDDDKV
Tag:	C-Myc/DDK
Predicted MW:	26 kDa
Concentration:	>0.05 µg/µL as determined by microplate BCA method
Purity:	> 80% as determined by SDS-PAGE and Coomassie blue staining
Buffer:	25 mM Tris-HCl, 100 mM glycine, pH 7.3, 10% glycerol
Preparation:	Recombinant protein was captured through anti-DDK affinity column followed by conventional chromatography steps.
Note:	For testing in cell culture applications, please filter before use. Note that you may experience some loss of protein during the filtration process.
Storage:	Store at -80°C.
Stability:	Stable for 12 months from the date of receipt of the product under proper storage and handling conditions. Avoid repeated freeze-thaw cycles.
RefSeq:	NP_612464
Locus ID:	115908
UniProt ID:	Q96CG8



[View online »](#)

RefSeq Size: 1279

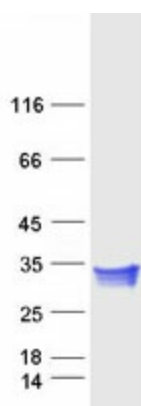
Cytogenetics: 8q22.3

RefSeq ORF: 729

Summary: This locus encodes a protein that may play a role in the cellular response to arterial injury through involvement in vascular remodeling. Mutations at this locus have been associated with Barrett esophagus and esophageal adenocarcinoma. Alternatively spliced transcript variants have been described. [provided by RefSeq, Jan 2012]

Protein Families: Secreted Protein

Product images:



Coomassie blue staining of purified CTHRC1 protein (Cat# [TP304348]). The protein was produced from HEK293T cells transfected with CTHRC1 cDNA clone (Cat# [RC204348]) using MegaTran 2.0 (Cat# [TT210002]).