

Product datasheet for **TP304347M**

Syntaxin 16 (STX16) (NM_003763) Human Recombinant Protein

Product data:

Product Type:	Recombinant Proteins
Description:	Recombinant protein of human syntaxin 16 (STX16), transcript variant 2, 100 µg
Species:	Human
Expression Host:	HEK293T
Expression cDNA Clone or AA Sequence:	>RC204347 protein sequence Red =Cloning site Green =Tags(s)
	<p>MATRRLTDAFLLLRNNSIQNRQLLAEQLADDRMALVSGISLDPEAAIGVTKRPPPKWVDGVDEIQYDVGR IKQKMKELASLHDKHLNRPTLDDSEEEHAIEITTQEITQLFHRCQRAVQALPSRARACSEQEGRLLGNV VASLAQALQELSTFRHAQSGYLKRMKNREERSQHFFDTSVPLMDDGDDNTLYHRGFTEQLVLVEQNTL MVEEREREIRQIVQSISDLNEIFRDLGAMIVEQGTVLDRIDYNVEQSCIKTEDGLKQLHKAQYQKKNRK MLVILILFVIIIVLIVLVGVKSR</p> <p>TRTRPLEQKLISEEDLAANDILDYKDDDDKV</p>
Tag:	C-Myc/DDK
Predicted MW:	34.6 kDa
Concentration:	>0.05 µg/µL as determined by microplate BCA method
Purity:	> 80% as determined by SDS-PAGE and Coomassie blue staining
Buffer:	25 mM Tris-HCl, 100 mM glycine, pH 7.3, 10% glycerol
Preparation:	Recombinant protein was captured through anti-DDK affinity column followed by conventional chromatography steps.
Note:	For testing in cell culture applications, please filter before use. Note that you may experience some loss of protein during the filtration process.
Storage:	Store at -80°C.
Stability:	Stable for 12 months from the date of receipt of the product under proper storage and handling conditions. Avoid repeated freeze-thaw cycles.
RefSeq:	<u>NP_003754</u>
Locus ID:	8675



[View online »](#)

UniProt ID: [Q14662](#), [Q14662-2](#)

RefSeq Size: 4915

Cytogenetics: 20q13.32

RefSeq ORF: 912

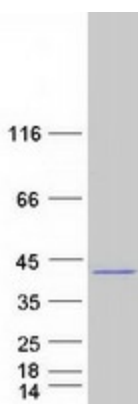
Synonyms: SYN16

Summary: This gene encodes a protein that is a member of the syntaxin or t-SNARE (target-SNAP receptor) family. These proteins are found on cell membranes and serve as the targets for V-SNARES (vesicle-SNAP receptors) permitting specific synaptic vesicle docking and fusion. A microdeletion in the region of chromosome 20 where this gene is located has been associated with pseudohypoparathyroidism type 1b. Multiple transcript variants have been found for this gene. Read-through transcription also exists between this gene and the neighboring downstream aminopeptidase-like 1 (NPEPL1) gene. [provided by RefSeq, Mar 2011]

Protein Families: Druggable Genome, Transmembrane

Protein Pathways: SNARE interactions in vesicular transport

Product images:



Coomassie blue staining of purified STX16 protein (Cat# [TP304347]). The protein was produced from HEK293T cells transfected with STX16 cDNA clone (Cat# [RC204347]) using MegaTran 2.0 (Cat# [TT210002]).