

## Product datasheet for **TP304346M**

### **TXNL6 (NXNL1) (NM\_138454) Human Recombinant Protein**

#### Product data:

**Product Type:** Recombinant Proteins

**Description:** Recombinant protein of human nucleoredoxin-like 1 (NXNL1), 100 µg

**Species:** Human

**Expression Host:** HEK293T

**Expression cDNA Clone or AA Sequence:** >RC204346 protein sequence  
**Red**=Cloning site **Green**=Tags(s)

MASLFSGRILIRNNSDQDELDTAEVSRRLLENRLVLLFFGAGACPQCQAFVPILKDFVRLTDEFYVLR  
AQLALVYVSQDSTEEQQDLFLKDMPPKKWLFPLFEDDLRRDLGRQFSVERLPAVWLKPDGDVLRDGADE  
IQRLGTACFANWQEAAEVLDRNFQLPEDLEDQEPRSLTECLRRHKYRVEKAARGGRDPGGGGGEEGGAGG  
LF

**TRTRPLEQKLISEEDLAANDILDYKDDDDKV**

**Tag:** C-Myc/DDK

**Predicted MW:** 23.8 kDa

**Concentration:** >0.05 µg/µL as determined by microplate BCA method

**Purity:** > 80% as determined by SDS-PAGE and Coomassie blue staining

**Buffer:** 25 mM Tris-HCl, 100 mM glycine, pH 7.3, 10% glycerol

**Preparation:** Recombinant protein was captured through anti-DDK affinity column followed by conventional chromatography steps.

**Note:** For testing in cell culture applications, please filter before use. Note that you may experience some loss of protein during the filtration process.

**Storage:** Store at -80°C.

**Stability:** Stable for 12 months from the date of receipt of the product under proper storage and handling conditions. Avoid repeated freeze-thaw cycles.

**RefSeq:** [NP\\_612463](#)

**Locus ID:** 115861

**UniProt ID:** [Q96CM4](#)



[View online »](#)

RefSeq Size: 948

Cytogenetics: 19p13.11

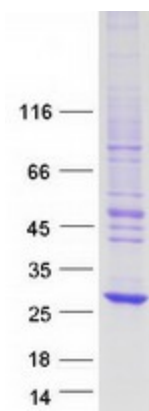
RefSeq ORF: 636

Synonyms: RDCVF; TXNL6

**Summary:** Retinitis pigmentosa (RP) is a disease that leads to blindness by degeneration of cone photoreceptors. Rods produce factors required for cone viability. The protein encoded by this gene is one of those factors and is similar to a truncated form of thioredoxin. This gene has been proposed to have therapeutic value against RP. [provided by RefSeq, Dec 2015]

**Protein Families:** Druggable Genome

### Product images:



Coomassie blue staining of purified NXNL1 protein (Cat# [TP304346]). The protein was produced from HEK293T cells transfected with NXNL1 cDNA clone (Cat# [RC204346]) using MegaTran 2.0 (Cat# [TT210002]).