

Product datasheet for **TP304346L**

TXNL6 (NXNL1) (NM_138454) Human Recombinant Protein

Product data:

Product Type:	Recombinant Proteins
Description:	Recombinant protein of human nucleoredoxin-like 1 (NXNL1), 1 mg
Species:	Human
Expression Host:	HEK293T
Expression cDNA Clone or AA Sequence:	>RC204346 protein sequence Red =Cloning site Green =Tags(s)
	 MASLFSGRILIRNNSDQDELDTAEVSRRLLENRLVLLFFGAGACPQCQAFVPIPKDFFVRLTDEFYVLR AQLALVYVSQDSTEEQQDLFLKDMPPKKWLFPLFEDDLRRDLGRQFSVERLPAVWLKPDGDVLT RDGADE IQLRGTACFANWQEA AEVLDRNFQLPEDLEDQEPRSLTECLRRHKYRVEKAARGGRDPGGGGG EEGGAGG LF TRTRPLEQKLISEEDLAANDILDYKDDDDKV
Tag:	C-Myc/DDK
Predicted MW:	23.8 kDa
Concentration:	>0.05 µg/µL as determined by microplate BCA method
Purity:	> 80% as determined by SDS-PAGE and Coomassie blue staining
Buffer:	25 mM Tris-HCl, 100 mM glycine, pH 7.3, 10% glycerol
Preparation:	Recombinant protein was captured through anti-DDK affinity column followed by conventional chromatography steps.
Note:	For testing in cell culture applications, please filter before use. Note that you may experience some loss of protein during the filtration process.
Storage:	Store at -80°C.
Stability:	Stable for 12 months from the date of receipt of the product under proper storage and handling conditions. Avoid repeated freeze-thaw cycles.
RefSeq:	NP_612463
Locus ID:	115861
UniProt ID:	Q96CM4



[View online »](#)

RefSeq Size: 948

Cytogenetics: 19p13.11

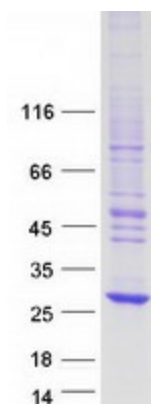
RefSeq ORF: 636

Synonyms: RDCVF; TXNL6

Summary: Retinitis pigmentosa (RP) is a disease that leads to blindness by degeneration of cone photoreceptors. Rods produce factors required for cone viability. The protein encoded by this gene is one of those factors and is similar to a truncated form of thioredoxin. This gene has been proposed to have therapeutic value against RP. [provided by RefSeq, Dec 2015]

Protein Families: Druggable Genome

Product images:



Coomassie blue staining of purified NXNL1 protein (Cat# [TP304346]). The protein was produced from HEK293T cells transfected with NXNL1 cDNA clone (Cat# [RC204346]) using MegaTran 2.0 (Cat# [TT210002]).