

Product datasheet for **TP304346**

TXNL6 (NXNL1) (NM_138454) Human Recombinant Protein

Product data:

Product Type: Recombinant Proteins

Description: Recombinant protein of human nucleoredoxin-like 1 (NXNL1), 20 µg

Species: Human

Expression Host: HEK293T

**Expression cDNA Clone
or AA Sequence:** >RC204346 protein sequence
Red=Cloning site **Green**=Tags(s)

MASLFSGRILIRNNSDQDELDTAEVSRRLLENRLVLLFFGAGACPQCQAFVPILKDFVRLTDEFYVLRA
AQLALVYVSQDSTEEQQDLFLKDMPPKKWLF L PFEDDLRRDLGRQFSVERLPVWVLPKPDGDLTRDGADE
IQRLGTACFANWQEA AEVLDRNFQLPEDLEDQEPRSLTECLRRHKYRVEKAARGGRDPGGGGGEEGGAGG
LF

TRTRPLEQKLISEEDLAANDILDYKDDDDKV

Tag: C-Myc/DDK

Predicted MW: 23.8 kDa

Concentration: >0.05 µg/µL as determined by microplate BCA method

Purity: > 80% as determined by SDS-PAGE and Coomassie blue staining

Buffer: 25 mM Tris-HCl, 100 mM glycine, pH 7.3, 10% glycerol

Preparation: Recombinant protein was captured through anti-DDK affinity column followed by conventional chromatography steps.

Note: For testing in cell culture applications, please filter before use. Note that you may experience some loss of protein during the filtration process.

Storage: Store at -80°C.

Stability: Stable for 12 months from the date of receipt of the product under proper storage and handling conditions. Avoid repeated freeze-thaw cycles.

RefSeq: [NP_612463](#)

Locus ID: 115861

UniProt ID: [Q96CM4](#)



[View online >](#)

RefSeq Size: 948

Cytogenetics: 19p13.11

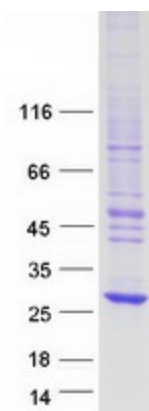
RefSeq ORF: 636

Synonyms: RDCVF; TXNL6

Summary: Retinitis pigmentosa (RP) is a disease that leads to blindness by degeneration of cone photoreceptors. Rods produce factors required for cone viability. The protein encoded by this gene is one of those factors and is similar to a truncated form of thioredoxin. This gene has been proposed to have therapeutic value against RP. [provided by RefSeq, Dec 2015]

Protein Families: Druggable Genome

Product images:



Coomassie blue staining of purified NXNL1 protein (Cat# TP304346). The protein was produced from HEK293T cells transfected with NXNL1 cDNA clone (Cat# [RC204346]) using MegaTran 2.0 (Cat# [TT210002]).