

## Product datasheet for TP304342

### ARH3 (ADPRHL2) (NM\_017825) Human Recombinant Protein

#### Product data:

Product Type:	Recombinant Proteins
Description:	Recombinant protein of human ADP-ribosylhydrolase like 2 (ADPRHL2), nuclear gene encoding mitochondrial protein, 20 µg
Species:	Human
Expression Host:	HEK293T
Expression cDNA Clone or AA Sequence:	>RC204342 protein sequence Red=Cloning site Green=Tags(s)

MAAAAMAAAAGGGAGAARSLSRFRGCLAGALLGDCVGSFYEAHDTVDLTSVLRHVQSLEPDPGTPGSERT  
EALYYTDDTAMARALVQSLLAKEAFDEVDMAHRFAQEYKKDPDRGYGAGVVTVFKLLNPKCRDVFEPAR  
AQFNGKGSYNGGAMRVAGISLAYSSVDVQKFARLSAQLTHASSLGYNGAILQALAVHLALQGESSEH  
FLKQLLGHMEDLEGDAQSVLDARELGMEERPYSRLKIGELLDQASVTREEVSELNGIAAFESVPTA  
IYCFRLCMEPDPEIPSAFNSLQRTLIIYSISLGGDTDIATMAGAIAGAYYGMDQVPESWQQSCEGYEETD  
ILAQSLHRVFQKS

TRTRPLEQKLISEEDLAANDILDYKDDDDKV

Tag:	C-Myc/DDK
Predicted MW:	38.8 kDa
Concentration:	>0.05 µg/µL as determined by microplate BCA method
Purity:	> 80% as determined by SDS-PAGE and Coomassie blue staining
Buffer:	25 mM Tris-HCl, 100 mM glycine, pH 7.3, 10% glycerol
Preparation:	Recombinant protein was captured through anti-DDK affinity column followed by conventional chromatography steps.
Note:	For testing in cell culture applications, please filter before use. Note that you may experience some loss of protein during the filtration process.
Storage:	Store at -80°C.
Stability:	Stable for 12 months from the date of receipt of the product under proper storage and handling conditions. Avoid repeated freeze-thaw cycles.
RefSeq:	<u>NP_060295</u>

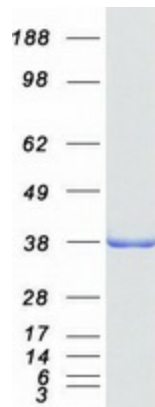


[View online »](#)

Locus ID: 54936  
UniProt ID: [Q9NX46](#)  
RefSeq Size: 1701  
Cytogenetics: 1p34.3  
RefSeq ORF: 1089  
Synonyms: ADPRHL2; ARH3; CONDSIAS

**Summary:** This gene encodes a member of the ADP-ribosylglycohydrolase family. The encoded enzyme catalyzes the removal of ADP-ribose from ADP-ribosylated proteins. This enzyme localizes to the mitochondria, in addition to the nucleus and cytoplasm.[provided by RefSeq, Feb 2009]

### Product images:



Coomassie blue staining of purified ADPRHL2 protein (Cat# TP304342). The protein was produced from HEK293T cells transfected with ADPRHL2 cDNA clone (Cat# [RC204342]) using MegaTran 2.0 (Cat# [TT210002]).