

Product datasheet for **TP304341M**

RASEF (NM_152573) Human Recombinant Protein

Product data:

Product Type:	Recombinant Proteins
Description:	Recombinant protein of human RAS and EF-hand domain containing (RASEF), 100 µg
Species:	Human
Expression Host:	HEK293T
Expression cDNA Clone or AA Sequence:	>RC204341 protein sequence Red =Cloning site Green =Tags(s)

MEADGDGEELARLSVFAACDANRSGRLEREEFRALCTELRVRPADAEAVFQRLDADRDGAITFQEFARG
 FLGSLRGRRRDWGPLDPAPAVSEAGPETHDSEDEGEDAAAAATSCGPASPGRWQDFQARLGDEA
 K
 FIPREEQVSTLYQNINLVEPRLIQPYEHVIKNFIREIRLQSTEMENLAIKRAQDKAAMQLSELEEEMD
 QRIQAAEHKTRKDEKRKAEEALSDLRQYETEVGDLQVTIKLRKLEEQSKRVSQKEDVAALKKQIYDLS
 MENQKVKKDLLEAQTNIAFLQSELDALKSDYADQSLNTERDLEIIRAYTEDRNSLERQIEILQTANRKLH
 DSNDGLRSALENSYSKFNRSLHINNISPNTISRSSPKFIGHSPQPLGYDRSSRSSVYDEDCDSLALCDP
 LQRTNCEVDSLPESCFDSGLSTLRDPNEYDSEVEYKHQRGFQRSHGVQESFGGDASDTPDIRDEETFG
 LEDVASVLDWKPQGSVSEGSIVSSSRKPISALSPQTDLVDDNAKSFSSQKAYKIVLAGDAAVGKSSFLMR
 LCKNEFRENISATLGVDQMKTLIVDGERTVLQLWDTAGQERFRSIKSYFRKADGVLLLYDVTCEKSFL
 NIREWVDMIEDAAHETVPIMLVGNKADIRDTAATEGQKCVPGHFGKELAMTYGALFCETSAKDGSNIVEA
 VLHLAREVKKRTDKDDSRITNLGTNSKKSPQMKNCCNG

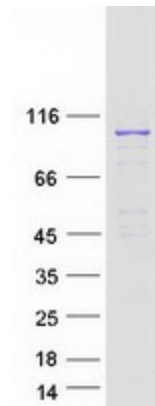
SGPTRTRPLE**QKLISEEDLA**AND**ILDYKDDDDK**V

Tag:	C-Myc/DDK
Predicted MW:	82.7 kDa
Concentration:	>0.05 µg/µL as determined by microplate BCA method
Purity:	> 80% as determined by SDS-PAGE and Coomassie blue staining
Buffer:	25 mM Tris-HCl, 100 mM glycine, pH 7.3, 10% glycerol
Preparation:	Recombinant protein was captured through anti-DDK affinity column followed by conventional chromatography steps.
Note:	For testing in cell culture applications, please filter before use. Note that you may experience some loss of protein during the filtration process.


[View online »](#)

Storage:	Store at -80°C.
Stability:	Stable for 12 months from the date of receipt of the product under proper storage and handling conditions. Avoid repeated freeze-thaw cycles.
RefSeq:	NP_689786
Locus ID:	158158
UniProt ID:	Q8IZ41
RefSeq Size:	5594
Cytogenetics:	9q21.32
RefSeq ORF:	2220
Synonyms:	RAB45
Summary:	This gene is a member of the Rab family of GTPases that are involved in regulation of membrane traffic. The encoded protein contains an N-terminal EF-hand domain, a coiled-coil motif and a C-terminal Rab domain. A potential role as tumor suppressor has been indicated for this gene. [provided by RefSeq, Nov 2012]
Protein Families:	Druggable Genome

Product images:



Coomassie blue staining of purified RASEF protein (Cat# [TP304341]). The protein was produced from HEK293T cells transfected with RASEF cDNA clone (Cat# [RC204341]) using MegaTran 2.0 (Cat# [TT210002]).