

Product datasheet for **TP304341L**

RASEF (NM_152573) Human Recombinant Protein

Product data:

Product Type: Recombinant Proteins

Description: Recombinant protein of human RAS and EF-hand domain containing (RASEF), 1 mg

Species: Human

Expression Host: HEK293T

Expression cDNA Clone or AA Sequence: >RC204341 protein sequence
Red=Cloning site **Green**=Tags(s)

MEADGDGEELARLSVFAACDANRSGRLEREEFRALCTELRVRPADAEAVFQRLDADRDGAITFQEFARG
FLGSLRGGRRRDWGPLDPAPAVSEAGPETHDSEDEGEDAAAAATSCGPASPGRWQDFQARLGDEA
K

FIPREEQVSTLYQNINLVEPRLIQPYEHVIKNFIREIRLQSTEMENLAIKRAQDKAAMQLSELEEEMD
QRIQAAEHKTRKDEKRKAEEALSDLRQYETEVGDLQVTIKLRKLEEQSKRVSKEDVAALKKQIYDLS
MENQKVKKDLLEAQTNIQFLQSELDALKSDYADQSLNTERDLEIIRAYTEDRNSLERQIEILQTANRKLH
DSNDGLRSALENSYSKFNRSLHINNISPNTISRSSPKFIGHSPQPLGYDRSSRSYVDEDCDSLALCDP
LQRTNCEVDSLPESCFDSGLSTLRDPNEYDSEVEYKHQRGFQRSHGVQESFGGDASDTPDIRDEETFG
LEDVASVLDWKPQGSVSEGSIVSSSRKPISALSPQTDLVDDNAKSFSQKAYKIVLAGDAAVGKSSFLMR
LCKNEFRENISATLGVDQMKTLIVDGERTVLQLWDTAGQERFRSIKSYFRKADGVLLLYDVTCEKSFL
NIREWVDMIEDAAHETVPIMLVGNKADIRDTAATEGQKCVPGHFGKELAMTYGALFCETSAKDGSNIVEA
VLHLAREVKKRTDKDDSRITNLGTNSKKSPQMKNCCNG

SGPTRTRPLEQKLISEEDLAANDILDYKDDDDKV

Tag: C-Myc/DDK

Predicted MW: 82.7 kDa

Concentration: >0.05 µg/µL as determined by microplate BCA method

Purity: > 80% as determined by SDS-PAGE and Coomassie blue staining

Buffer: 25 mM Tris-HCl, 100 mM glycine, pH 7.3, 10% glycerol

Preparation: Recombinant protein was captured through anti-DDK affinity column followed by conventional chromatography steps.

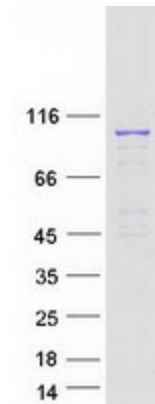
Note: For testing in cell culture applications, please filter before use. Note that you may experience some loss of protein during the filtration process.



[View online »](#)

Storage:	Store at -80°C.
Stability:	Stable for 12 months from the date of receipt of the product under proper storage and handling conditions. Avoid repeated freeze-thaw cycles.
RefSeq:	NP_689786
Locus ID:	158158
UniProt ID:	Q8IZ41
RefSeq Size:	5594
Cytogenetics:	9q21.32
RefSeq ORF:	2220
Synonyms:	RAB45
Summary:	This gene is a member of the Rab family of GTPases that are involved in regulation of membrane traffic. The encoded protein contains an N-terminal EF-hand domain, a coiled-coil motif and a C-terminal Rab domain. A potential role as tumor suppressor has been indicated for this gene. [provided by RefSeq, Nov 2012]
Protein Families:	Druggable Genome

Product images:



Coomassie blue staining of purified RASEF protein (Cat# [TP304341]). The protein was produced from HEK293T cells transfected with RASEF cDNA clone (Cat# [RC204341]) using MegaTran 2.0 (Cat# [TT210002]).