

Product datasheet for TP304339L

GCC1 (NM_024523) Human Recombinant Protein

Product data:

Product Type:	Recombinant Proteins
Description:	Recombinant protein of human GRIP and coiled-coil domain containing 1 (GCC1), 1 mg
Species:	Human
Expression Host:	HEK293T
Expression cDNA Clone or AA Sequence:	>RC204339 protein sequence Red=Cloning site Green=Tags(s)

MEKFGMNFGGGSPKDLLETIETQKKQLLQYQARLKDVVRAYKSLLEKEALEASIKVLSVSHEADVGLA
GVQLPGLTFPDSVDDRCSTHSEDSTGTATSLDTAASLTSTKGEFGVEDDRPARGPPPPKSEEASWSESGV
SSSSGDGPFAGGEVDKRLHQLKTQLATLTSSLATVTQEKSMEASYLADKKMKQDLEDASNKAEERAR
LEGELKGLQEQAETKARLITQQHDRAQEQSDHALMLRELQKLLQEERTQRQDLELRLEETREALAGRAY
AAEQMEGFELQTKQLTREVEELKSELQAIRDEKNQDPRLQELQEEAARLKSHFQAQLQEMRKTALAED
QLRQQSQVEEQRVAALNQISEVSELLGTYEKAKQKQDLAIQKLERILQLDLENKTLALAASSRSPLDS
HGEESLDVNVLKDKMEKLRLLQVAARKSQVTLQDVEKLCLEIMPSSAADGEKATALYYQELKQLKE
EFERYKMRAQVVLKSKNTKDGNLGKELEAAQEQLAELKEKYISLRSCEELEHQHQEQEADDWKQELARLQ
QLHRQELERCQLDFRDRTLKLEELHKQRDRALAVLTEKDLELEQLRSVALASGLPGRRSPVGGGGPGDP
ADTSSDSLQALQLAAANPTFFLYAEQLARKEVEITSLRKQKHRLEVEVHQLQDRLLLEGERHREEVA
ALQSHIEKNIRDQSREGANLEYLKNIIYRFLTPDSLGRQQTTLTAILHFSPEEKQVIMRLPTSASWW
PSGKR

TRTRPLEQKLISEEDLAANDILDYKDDDDKV

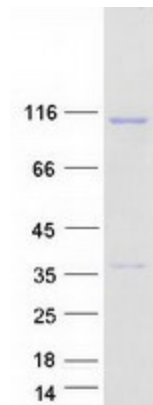
Tag:	C-Myc/DDK
Predicted MW:	87.6 kDa
Concentration:	>0.05 µg/µL as determined by microplate BCA method
Purity:	> 80% as determined by SDS-PAGE and Coomassie blue staining
Buffer:	25 mM Tris-HCl, 100 mM glycine, pH 7.3, 10% glycerol
Preparation:	Recombinant protein was captured through anti-DDK affinity column followed by conventional chromatography steps.
Note:	For testing in cell culture applications, please filter before use. Note that you may experience some loss of protein during the filtration process.



[View online »](#)

Storage:	Store at -80°C.
Stability:	Stable for 12 months from the date of receipt of the product under proper storage and handling conditions. Avoid repeated freeze-thaw cycles.
RefSeq:	NP_078799
Locus ID:	79571
UniProt ID:	Q96CN9
RefSeq Size:	4152
Cytogenetics:	7q32.1
RefSeq ORF:	2325
Synonyms:	GCC1P; GCC88
Summary:	The protein encoded by this gene is a peripheral membrane protein. It is sensitive to brefeldin A. This encoded protein contains a GRIP domain which is thought to be used in targeting. It may play a role in the organization of trans-Golgi network subcompartment involved with membrane transport. [provided by RefSeq, Jul 2008]

Product images:



Coomassie blue staining of purified GCC1 protein (Cat# [TP304339]). The protein was produced from HEK293T cells transfected with GCC1 cDNA clone (Cat# [RC204339]) using MegaTran 2.0 (Cat# [TT210002]).