

Product datasheet for **TP304330M**

Alkaline Phosphatase (ALPPL2) (NM_031313) Human Recombinant Protein

Product data:

Product Type:	Recombinant Proteins
Description:	Recombinant protein of human alkaline phosphatase, placental-like 2 (ALPPL2), 100 µg
Species:	Human
Expression Host:	HEK293T
Expression cDNA Clone or AA Sequence:	>RC204330 representing NM_031313 Red =Cloning site Green =Tags(s)
	<p>MQGPWVLLLLGLRLQLSLGIIPVEEENPDFWNRQAAEALGAAKKLQPAQTAAKNLIIFLGDGMGVSTVTA ARILKGQKKDKLGPETFLAMDRFPYVALSKTYSVDKHPDMSGATATAYLCGVKGNFQTIGLSAAARFNQC NTTRGNEVISVNRKAGKSVGVTTTRVQHASPAGTYAHTVNRNWYSADVPASARQEGCQDIATQLI SNMDDIDVILGGGRKYMFPMTGPDPEYPDDYSQGGTRLDGKNLVQEWLAKHQGARYVWNRTELLQASLDPS VTHLMGLFEPGDMKYEIHRDSTLDPSLMEATEAALRLLSRNPRGFFLFVEGGRIDHGHESRAYRALRET IMFDDAIERAGQLTSEEDTLSLVTADHSHVFSFGGYPLRGSSIFGLAPGKARDRKAYTVLLYGNGPGYVL KDGARPDVTESESGSPEYRQQSAVPLDGETHAGEDVAVFARGPQAHLVHGVQEQTFAIHVMAFAACLEPY TACDLAPPAGTTDAAHPGPSVVPALLPLL LAGTLLLLGTATAP</p> <p>TRTRPLEQKLISEEDLAANDILDYKDDDDKV</p>
Tag:	C-Myc/DDK
Predicted MW:	55.2 kDa
Concentration:	>0.05 µg/µL as determined by microplate BCA method
Purity:	> 80% as determined by SDS-PAGE and Coomassie blue staining
Buffer:	25 mM Tris-HCl, 100 mM glycine, pH 7.3, 10% glycerol
Preparation:	Recombinant protein was captured through anti-DDK affinity column followed by conventional chromatography steps.
Note:	For testing in cell culture applications, please filter before use. Note that you may experience some loss of protein during the filtration process.
Storage:	Store at -80°C.
Stability:	Stable for 12 months from the date of receipt of the product under proper storage and handling conditions. Avoid repeated freeze-thaw cycles.



[View online »](#)

RefSeq: [NP_112603](#)

Locus ID: 251

UniProt ID: [P10696](#)

RefSeq Size: 2485

Cytogenetics: 2q37.1

RefSeq ORF: 1596

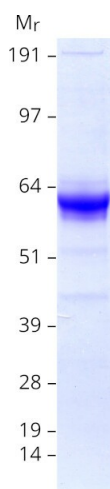
Synonyms: ALPPL; ALPPL2; GCAP

Summary: There are at least four distinct but related alkaline phosphatases: intestinal, placental, placental-like, and liver/bone/kidney (tissue non-specific). The product of this gene is a membrane bound glycosylated enzyme, localized to testis, thymus and certain germ cell tumors, that is closely related to both the placental and intestinal forms of alkaline phosphatase. [provided by RefSeq, Jul 2008]

Protein Families: Druggable Genome

Protein Pathways: Folate biosynthesis, Metabolic pathways

Product images:



Coomassie blue staining of purified ALPG protein (Cat# [TP304330]). The protein was produced from HEK293T cells transfected with ALPG cDNA clone (Cat# [RC204330]) using MegaTran 2.0 (Cat# [TT210002]).