

Product datasheet for **TP304329L**

MRPL19 (NM_014763) Human Recombinant Protein

Product data:

Product Type:	Recombinant Proteins
Description:	Recombinant protein of human mitochondrial ribosomal protein L19 (MRPL19), nuclear gene encoding mitochondrial protein, 1 mg
Species:	Human
Expression Host:	HEK293T
Expression cDNA	>RC204329 protein sequence
Clone or AA Sequence:	Red=Cloning site Green=Tags(s)

MAACIAAGHWAAMGLGRSFQAARTLLPPPASIACRVHAGPVRQSTGPSEPGAFQPPPKPVIVDKHRPVE
PERRFLSPEFIPRRGRDPLKFQIERKDMLEERRKVLHIPEFYVGSILRVTTADPYASGKISQFLGICIQR
SGRGLGATFILRNVIEGQGVEICFELYNPRVQEIQVVKLEKRLDDSLLYLRDALPEYSTFDVNMKPVVQE
PNQKVPVNELKVKMKPKPWSKRWERPNFNKIRFDLCLTEQQMKEAQKWNQPWLEFDMMREYDTSKIEA
AIWKEIEASKRS

TRTRPLEQKLISEEDLAANDILDYKDDDDKV

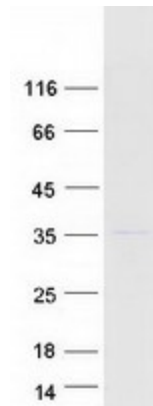
Tag:	C-Myc/DDK
Predicted MW:	33.4 kDa
Concentration:	>0.05 µg/µL as determined by microplate BCA method
Purity:	> 80% as determined by SDS-PAGE and Coomassie blue staining
Buffer:	25 mM Tris-HCl, 100 mM glycine, pH 7.3, 10% glycerol
Preparation:	Recombinant protein was captured through anti-DDK affinity column followed by conventional chromatography steps.
Note:	For testing in cell culture applications, please filter before use. Note that you may experience some loss of protein during the filtration process.
Storage:	Store at -80°C.
Stability:	Stable for 12 months from the date of receipt of the product under proper storage and handling conditions. Avoid repeated freeze-thaw cycles.
RefSeq:	NP_055578
Locus ID:	9801



[View online »](#)

UniProt ID:	P49406
RefSeq Size:	7827
Cytogenetics:	2p12
RefSeq ORF:	876
Synonyms:	L19mt; MRP-L15; MRP-L19; MRPL15; RLX1; RPML15
Summary:	Mammalian mitochondrial ribosomal proteins are encoded by nuclear genes and help in protein synthesis within the mitochondrion. Mitochondrial ribosomes (mitoribosomes) consist of a small 28S subunit and a large 39S subunit. They have an estimated 75% protein to rRNA composition compared to prokaryotic ribosomes, where this ratio is reversed. Another difference between mammalian mitoribosomes and prokaryotic ribosomes is that the latter contain a 5S rRNA. Among different species, the proteins comprising the mitoribosome differ greatly in sequence, and sometimes in biochemical properties, which prevents easy recognition by sequence homology. This gene encodes a 39S subunit protein. [provided by RefSeq, Jul 2008]

Product images:



Coomassie blue staining of purified MRPL19 protein (Cat# [TP304329]). The protein was produced from HEK293T cells transfected with MRPL19 cDNA clone (Cat# [RC204329]) using MegaTran 2.0 (Cat# [TT210002]).