

## Product datasheet for TP304326M

### CRLF3 (NM\_015986) Human Recombinant Protein

#### Product data:

Product Type:	Recombinant Proteins
Description:	Recombinant protein of human cytokine receptor-like factor 3 (CRLF3), 100 µg
Species:	Human
Expression Host:	HEK293T
Expression cDNA Clone or AA Sequence:	>RC204326 protein sequence Red=Cloning site Green=Tags(s)

MRGAMELEPELLLQEARENVEAAQSYRRELGHRLEGLREARRQIKESASQTRDVLKQHFNDLKGTLGKLL  
DERLVTLLQEVDTIEQETIKPLDDCQKLIHGVNTAEDLVREGEIAMLGGVGEENEKLSFTKKASHIQL  
DSLPEVPLLVDVPCLSAQLDDSDILNIVKDHIFKHGTVASRPPVQIEELIEKPGGIIVRWCKVDDDFTAQD  
YRLQFRKCTSNHFEDVYVGSETEFIVLHIDPNVDYQFRVCARGDGRQEWSPWSVPQIGHSTLVPHEWTAG  
FEGYSLSSRRNIALRNDSSESGVLYSRAPTYFCGQTLTFRVETVGQPDRRDSIGVCAEKQDGYDSLQRDQ  
AVCISTNGAVFVNGKEMTNQLPAVTSGSTVTFDIEAVTLGTTSNNEGGHFKLRVTISSNNREVVFDWLLD  
QSCGSLYFGCSFFYPGWKVLVF

TRTRPLEQKLISEEDLAANDILDYKDDDDKV

Tag:	C-Myc/DDK
Predicted MW:	49.6 kDa
Concentration:	>0.05 µg/µL as determined by microplate BCA method
Purity:	> 80% as determined by SDS-PAGE and Coomassie blue staining
Buffer:	25 mM Tris-HCl, 100 mM glycine, pH 7.3, 10% glycerol
Preparation:	Recombinant protein was captured through anti-DDK affinity column followed by conventional chromatography steps.
Note:	For testing in cell culture applications, please filter before use. Note that you may experience some loss of protein during the filtration process.
Storage:	Store at -80°C.
Stability:	Stable for 12 months from the date of receipt of the product under proper storage and handling conditions. Avoid repeated freeze-thaw cycles.
RefSeq:	<a href="#">NP_057070</a>



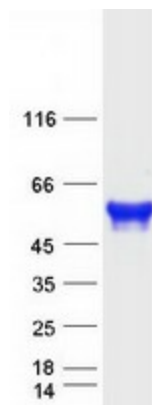
[View online »](#)

Locus ID:	51379
UniProt ID:	<a href="#">Q8IUI8</a>
RefSeq Size:	2954
Cytogenetics:	17q11.2
RefSeq ORF:	1326
Synonyms:	CREME-9; CREME9; CRLM9; CYTOR4; FRWS; p48.2

**Summary:** This gene encodes a cytokine receptor-like factor that may negatively regulate cell cycle progression at the G0/G1 phase. Studies of the related rat protein suggest that it may regulate neuronal morphology and synaptic vesicle biogenesis. This gene is one of several genes located in the neurofibromatosis type I tumor suppressor region on the q arm of chromosome 17, a region that is subject to microdeletions, duplications, chromosomal breaks and rearrangements. Alternative splicing of this gene results in multiple transcript variants. Related pseudogenes have been identified on chromosomes 2 and 5. [provided by RefSeq, Aug 2012]

**Protein Families:** Druggable Genome

### Product images:



Coomassie blue staining of purified CRLF3 protein (Cat# [TP304326]). The protein was produced from HEK293T cells transfected with CRLF3 cDNA clone (Cat# [RC204326]) using MegaTran 2.0 (Cat# [TT210002]).