

Product datasheet for **TP304326L**

CRLF3 (NM_015986) Human Recombinant Protein

Product data:

Product Type:	Recombinant Proteins
Description:	Recombinant protein of human cytokine receptor-like factor 3 (CRLF3), 1 mg
Species:	Human
Expression Host:	HEK293T
Expression cDNA Clone or AA Sequence:	>RC204326 protein sequence Red =Cloning site Green =Tags(s)
	<p>MRGAMELEPELLLQEARENVEAAQSYRRELGHRLEGLREARRQIKESASQTRDVLKQHFNDLKGTLGKLL DERLVTLLQEVDTIEQETIKPLDDCQKLIHGVNTAEDLVREGEIAMLGGVGEENEKLSFTKKASHIQL DSLPEVPLLVDVPCLSAQLDDDSILNIVKDHIFKHGTVASRPPVQIEELIEKPGGIIVRWCKVDDDFTAQD YRLQFRKCTSNHFEDVYVGSETEFIVLHIDPNVDYQFRVCARGDGRQEWSPWSVPQIGHSTLVPHEWTAG FEGYSLSSRRNIALRNDESSGVLYSRAPTYFCGQTLTFRVETVGQPDRRDSIGVCAEKQDGYDSLQRDQ AVCISTNGAVFVNGKEMTNQLPAVTSGSTVTFDIEAVTLGTTSNNEGGHFKLRVTISSNNREVVFDWLLD QSCGSLYFGCSFFYPGWKVLVF</p> <p>TRTRPLEQKLISEEDLAANDILDYKDDDDKV</p>
Tag:	C-Myc/DDK
Predicted MW:	49.6 kDa
Concentration:	>0.05 µg/µL as determined by microplate BCA method
Purity:	> 80% as determined by SDS-PAGE and Coomassie blue staining
Buffer:	25 mM Tris-HCl, 100 mM glycine, pH 7.3, 10% glycerol
Preparation:	Recombinant protein was captured through anti-DDK affinity column followed by conventional chromatography steps.
Note:	For testing in cell culture applications, please filter before use. Note that you may experience some loss of protein during the filtration process.
Storage:	Store at -80°C.
Stability:	Stable for 12 months from the date of receipt of the product under proper storage and handling conditions. Avoid repeated freeze-thaw cycles.
RefSeq:	<u>NP_057070</u>



[View online »](#)

Locus ID: 51379

UniProt ID: [Q8IUI8](#)

RefSeq Size: 2954

Cytogenetics: 17q11.2

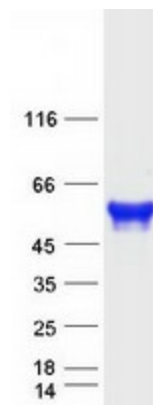
RefSeq ORF: 1326

Synonyms: CREME-9; CREME9; CRLM9; CYTOR4; FRWS; p48.2

Summary: This gene encodes a cytokine receptor-like factor that may negatively regulate cell cycle progression at the G0/G1 phase. Studies of the related rat protein suggest that it may regulate neuronal morphology and synaptic vesicle biogenesis. This gene is one of several genes located in the neurofibromatosis type I tumor suppressor region on the q arm of chromosome 17, a region that is subject to microdeletions, duplications, chromosomal breaks and rearrangements. Alternative splicing of this gene results in multiple transcript variants. Related pseudogenes have been identified on chromosomes 2 and 5. [provided by RefSeq, Aug 2012]

Protein Families: Druggable Genome

Product images:



Coomassie blue staining of purified CRLF3 protein (Cat# [TP304326]). The protein was produced from HEK293T cells transfected with CRLF3 cDNA clone (Cat# [RC204326]) using MegaTran 2.0 (Cat# [TT210002]).