

Product datasheet for **TP304323L**

HuC (ELAVL3) (NM_001420) Human Recombinant Protein

Product data:

Product Type:	Recombinant Proteins
Description:	Recombinant protein of human ELAV (embryonic lethal, abnormal vision, Drosophila)-like 3 (Hu antigen C) (ELAVL3), transcript variant 1, 1 mg
Species:	Human
Expression Host:	HEK293T
Expression cDNA Clone or AA Sequence:	>RC204323 representing NM_001420 Red =Cloning site Green =Tags(s)
	MVTQILGAMESQVGGGPAGPALPNGPLLGTNGATDDSKTNLIVNYLPQNMTQDEFKSLFGSIGDIESCKL VRDKITGQSLGYGFVNYSNDPNDADKAINLNLGLKLTQTKIKVSYARPSASIRDANLYVSGLPKTMMSQKE MEQLFSQYGRIITSRILVDQVTGVSRRVGFIRFDKRIEAEAAIKGLNGQKPLGAAEPITVKFANNPSQKT GQALLTHLYQSSARRYAGPLHHQTQRFRLDNLNLMAYGVKSPLSLIARFSPAIIDGMSGLAGVGLSGGAA GAGWCIFVYNLSPEADESVLWQLFGPFGAVTNVKVIRDFTTNKCKGFGFVTMTNYDEAAMAIASLNGYRL GERVLQVSFKTSKQHKA
	TRTRPLEQKLISEEDLAANDILDYKDDDDKV
Tag:	C-Myc/DDK
Predicted MW:	39.4 kDa
Concentration:	>0.05 µg/µL as determined by microplate BCA method
Purity:	> 80% as determined by SDS-PAGE and Coomassie blue staining
Buffer:	25 mM Tris-HCl, 100 mM glycine, pH 7.3, 10% glycerol
Preparation:	Recombinant protein was captured through anti-DDK affinity column followed by conventional chromatography steps.
Note:	For testing in cell culture applications, please filter before use. Note that you may experience some loss of protein during the filtration process.
Storage:	Store at -80°C.
Stability:	Stable for 12 months from the date of receipt of the product under proper storage and handling conditions. Avoid repeated freeze-thaw cycles.
RefSeq:	<u>NP_001411</u>

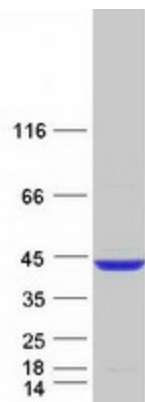


[View online »](#)

Locus ID:	1995
UniProt ID:	Q14576
RefSeq Size:	4682
Cytogenetics:	19p13.2
RefSeq ORF:	1101
Synonyms:	HUC; HUCL; PLE21

Summary: A member of the ELAVL protein family, ELAV-like 3 is a neural-specific RNA-binding protein which contains three RNP-type RNA recognition motifs. The observation that ELAVL3 is one of several Hu antigens (neuronal-specific RNA-binding proteins) recognized by the anti-Hu serum antibody present in sera from patients with paraneoplastic encephalomyelitis and sensory neuronopathy (PEM/PSN) suggests it has a role in neurogenesis. Two alternatively spliced transcript variants encoding distinct isoforms have been found for this gene. [provided by RefSeq, Jul 2008]

Product images:



Coomassie blue staining of purified ELAVL3 protein (Cat# [TP304323]). The protein was produced from HEK293T cells transfected with ELAVL3 cDNA clone (Cat# [RC204323]) using MegaTran 2.0 (Cat# [TT210002]).