

## Product datasheet for **TP304321L**

### **GNLY (NM\_006433) Human Recombinant Protein**

#### **Product data:**

<b>Product Type:</b>	Recombinant Proteins
<b>Description:</b>	Recombinant protein of human granulysin (GNLY), transcript variant NKG5, 1 mg
<b>Species:</b>	Human
<b>Expression Host:</b>	HEK293T
<b>Expression cDNA Clone or AA Sequence:</b>	>RC204321 protein sequence <b>Red</b> =Cloning site <b>Green</b> =Tags(s)
	 MATWALLLLAAMLLGNPGLVFSRLSPEYYDLARAHLRDEEKSCPLAQEGPQGDDLLTKTQELGRDYRTCL TIVQKLKMMVDKPTQRSVSNAATRVCRTGRSRWRDVCNFMRRYQSRVTQGLVAGETAQQICEDLRLCIP STGPL  <b>TRTRPLEQKLISEEDLAANDILDYKDDDDKV</b>
<b>Tag:</b>	C-Myc/DDK
<b>Predicted MW:</b>	16.2 kDa
<b>Concentration:</b>	>0.05 µg/µL as determined by microplate BCA method
<b>Purity:</b>	> 80% as determined by SDS-PAGE and Coomassie blue staining
<b>Buffer:</b>	25 mM Tris-HCl, 100 mM glycine, pH 7.3, 10% glycerol
<b>Preparation:</b>	Recombinant protein was captured through anti-DDK affinity column followed by conventional chromatography steps.
<b>Note:</b>	For testing in cell culture applications, please filter before use. Note that you may experience some loss of protein during the filtration process.
<b>Storage:</b>	Store at -80°C.
<b>Stability:</b>	Stable for 12 months from the date of receipt of the product under proper storage and handling conditions. Avoid repeated freeze-thaw cycles.
<b>RefSeq:</b>	<a href="#">NP_006424</a>
<b>Locus ID:</b>	10578
<b>UniProt ID:</b>	<a href="#">P22749</a>
<b>RefSeq Size:</b>	751



[View online »](#)

Cytogenetics: 2p11.2

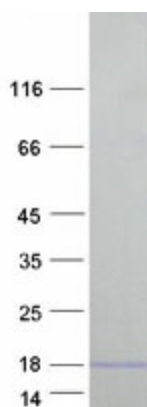
RefSeq ORF: 435

Synonyms: D2S69E; LAG-2; LAG2; NKG5; TLA519

**Summary:** The product of this gene is a member of the saposin-like protein (SAPLIP) family and is located in the cytotoxic granules of T cells, which are released upon antigen stimulation. This protein is present in cytotoxic granules of cytotoxic T lymphocytes and natural killer cells, and it has antimicrobial activity against *M. tuberculosis* and other organisms. Alternatively spliced transcript variants encoding different isoforms have been identified. [provided by RefSeq, Jul 2008]

**Protein Families:** Secreted Protein

### Product images:



Coomassie blue staining of purified GNLY protein (Cat# [TP304321]). The protein was produced from HEK293T cells transfected with GNLY cDNA clone (Cat# [RC204321]) using MegaTran 2.0 (Cat# [TT210002]).