

Product datasheet for **TP304321**

GNLY (NM_006433) Human Recombinant Protein

Product data:

Product Type:	Recombinant Proteins
Description:	Recombinant protein of human granulysin (GNLY), transcript variant NKG5, 20 µg
Species:	Human
Expression Host:	HEK293T
Expression cDNA Clone or AA Sequence:	>RC204321 protein sequence Red =Cloning site Green =Tags(s)
	 MATWALLLLAAMLLGNPGLVFSRLSPEYYDLARAHLRDEEKSCPLAQEGPQGDLTKTQELGRDYRTCL TIVQKLKMMVDKPTQRSVSNAATRVCRTGRSRWRDVCNFMRRYQSRVTQGLVAGETAQQICEDLRLCIP STGPL TRTRPLEQKLISEEDLAANDILDYKDDDDKV
Tag:	C-Myc/DDK
Predicted MW:	16.2 kDa
Concentration:	>0.05 µg/µL as determined by microplate BCA method
Purity:	> 80% as determined by SDS-PAGE and Coomassie blue staining
Buffer:	25 mM Tris-HCl, 100 mM glycine, pH 7.3, 10% glycerol
Preparation:	Recombinant protein was captured through anti-DDK affinity column followed by conventional chromatography steps.
Note:	For testing in cell culture applications, please filter before use. Note that you may experience some loss of protein during the filtration process.
Storage:	Store at -80°C.
Stability:	Stable for 12 months from the date of receipt of the product under proper storage and handling conditions. Avoid repeated freeze-thaw cycles.
RefSeq:	NP_006424
Locus ID:	10578
UniProt ID:	P22749
RefSeq Size:	751



[View online »](#)

Cytogenetics: 2p11.2

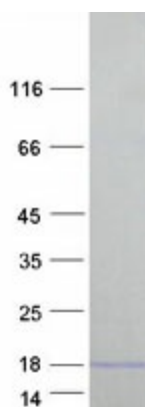
RefSeq ORF: 435

Synonyms: D2S69E; LAG-2; LAG2; NKG5; TLA519

Summary: The product of this gene is a member of the saposin-like protein (SAPLIP) family and is located in the cytotoxic granules of T cells, which are released upon antigen stimulation. This protein is present in cytotoxic granules of cytotoxic T lymphocytes and natural killer cells, and it has antimicrobial activity against *M. tuberculosis* and other organisms. Alternatively spliced transcript variants encoding different isoforms have been identified. [provided by RefSeq, Jul 2008]

Protein Families: Secreted Protein

Product images:



Coomassie blue staining of purified GNLY protein (Cat# TP304321). The protein was produced from HEK293T cells transfected with GNLY cDNA clone (Cat# [RC204321]) using MegaTran 2.0 (Cat# [TT210002]).