

## Product datasheet for **TP304319**

### ARSA (NM\_000487) Human Recombinant Protein

#### Product data:

Product Type:	Recombinant Proteins
Description:	Recombinant protein of human arylsulfatase A (ARSA), transcript variant 1, 20 µg
Species:	Human
Expression Host:	HEK293T
Expression cDNA Clone or AA Sequence:	>RC204319 protein sequence <b>Red</b> =Cloning site <b>Green</b> =Tags(s)

MGAPRLLLLALAAGLAVARPPNIVLIFADDLGYGDLGCYGHPSSTTPNLDQLAAGGLRFTDFYVPVSLCT  
PSRAALLTGRLPVRMGMYPGVLVPSSRGGLPLEEVTVAEVLAAARGYLTMAGKWHLGVGPEGAFPPHQG  
FHRFLGIPYSHDQGPCQNLTFCPPATPCDGGCDQGLVPIPLLANLSVEAQPPWLPGLEARYMAFAHDLMA  
DAQQRDRPFFLYASHHHTYPQFSGQSFAERSGRGPFGDSLMELDAAVGTLMTAIGDLGALLEETLVIFTA  
DNGPETMRMSRGGCSGLLRGKGTTYEGGVREPALAFWPGHIAPGVTHELASSLDLLPTLAALAGAPLPN  
VTLDGFDLSPLLLGTGKSPRQSLFFYPSYPDEVRGVFAVRSGKYKAHFFTQGSAHSDTTADPACHASSSL  
TAHEPPLLYDLSKDPGENYNLLGGVAGATPEVLQALKQLQLLKAQLDAAVTFGPSQVARGEDPALQICCH  
PGCTPRPACCHCPDPHA

**TRTRPLEQKLISEEDLAANDILDYKDDDDKV**

Tag:	C-Myc/DDK
Predicted MW:	51.9 kDa
Concentration:	>0.05 µg/µL as determined by microplate BCA method
Purity:	> 80% as determined by SDS-PAGE and Coomassie blue staining
Buffer:	25 mM Tris-HCl, 100 mM glycine, pH 7.3, 10% glycerol
Preparation:	Recombinant protein was captured through anti-DDK affinity column followed by conventional chromatography steps.
Note:	For testing in cell culture applications, please filter before use. Note that you may experience some loss of protein during the filtration process.
Storage:	Store at -80°C.
Stability:	Stable for 12 months from the date of receipt of the product under proper storage and handling conditions. Avoid repeated freeze-thaw cycles.



[View online »](#)

RefSeq: [NP\\_000478](#)

Locus ID: 410

UniProt ID: [P15289](#), [A0A0C4DFZ2](#), [B4DVI5](#)

RefSeq Size: 4325

Cytogenetics: 22q13.33

RefSeq ORF: 1521

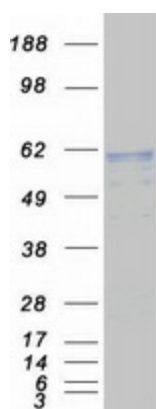
Synonyms: ASA; MLD

**Summary:** The protein encoded by this gene hydrolyzes cerebroside sulfate to cerebroside and sulfate. Defects in this gene lead to metachromatic leucodystrophy (MLD), a progressive demyelination disease which results in a variety of neurological symptoms and ultimately death. Alternatively spliced transcript variants have been described for this gene. [provided by RefSeq, Dec 2010]

**Protein Families:** Druggable Genome

**Protein Pathways:** Lysosome, Sphingolipid metabolism

### Product images:



Coomassie blue staining of purified ARSA protein (Cat# TP304319). The protein was produced from HEK293T cells transfected with ARSA cDNA clone (Cat# [RC204319]) using MegaTran 2.0 (Cat# [TT210002]).